

**All you may  
need in synthetic  
rope and  
accessories**

# 11. Marine & Offshore

Fibre Rope .....	490
Wire Rope .....	496
Swaging Systems .....	501
Compression Fittings .....	506
Turnbuckles & Rigging	
Screws .....	509
Toggles.....	519
Guard Rail Fittings & Pins .....	520
Shackles.....	523
Personnel Lifting Basket.....	526

See more at [www.certex.co.uk/products](http://www.certex.co.uk/products)

## Fibre Rope

### Blue Polypropylene 3 Strand Film



Description	Manufacturing Standard	Dia.	Length	MBL
		mm	mtrs	
Blue Polypropylene 3 strand Film	Commercial	4	220	no standard
Blue Polypropylene 3 strand Film	Commercial	6	220	no standard
Blue Polypropylene 3 strand Film	Commercial	8	220	no standard
Blue Polypropylene 3 strand Film	Commercial	10	220	no standard
Blue Polypropylene 3 strand Film	Commercial	12	220	no standard
Blue Polypropylene 3 strand Film	Commercial	14	220	no standard

### Blue Yarn Construction Polypropylene 3 Strand



Description	Manufacturing Standard	Dia.	Length	MBL
		mm	mtrs	kg
Blue Yarn Construction Polypropylene 3 strand	EN ISO 1346 2004	12	220	2100
Blue Yarn Construction Polypropylene 3 strand	EN ISO 1346 2004	14	220	3005
Blue Yarn Construction Polypropylene 3 strand	EN ISO 1346 2004	16	220	3770
Blue Yarn Construction Polypropylene 3 strand	EN ISO 1346 2004	18	220	4810
Blue Yarn Construction Polypropylene 3 strand	EN ISO 1346 2004	20	220	5800
Blue Yarn Construction Polypropylene 3 strand	EN ISO 1346 2004	24	220	8100
Blue Yarn Construction Polypropylene 3 strand	EN ISO 1346 2004	28	220	10700
Blue Yarn Construction Polypropylene 3 strand	EN ISO 1346 2004	32	220	13500

### White 3 Strand Polyester



Description	Manufacturing Standard	Dia.	Length	MBL
		mm	mtrs	kg
White 3 strand Polyester	EN ISO 1141 2004	6	220	560
White 3 strand Polyester	EN ISO 1141 2004	8	220	1020
White 3 strand Polyester	EN ISO 1141 2004	12	220	2270
White 3 strand Polyester	EN ISO 1141 2004	14	220	3180
White 3 strand Polyester	EN ISO 1141 2004	16	220	4060
White 3 strand Polyester	EN ISO 1141 2004	18	220	5080
White 3 strand Polyester	EN ISO 1141 2004	20	220	6350

## Nylon White 3 Strand



Description	Manufacturing Standard	Dia.	Length	MBL
		mm	mtrs	kg
Nylon White 3 strand	EN ISO 1140 2004	6	220	750
Nylon White 3 strand	EN ISO 1140 2004	8	220	1350
Nylon White 3 strand	EN ISO 1140 2004	10	220	2080
Nylon White 3 strand	EN ISO 1140 2004	12	220	3000
Nylon White 3 strand	EN ISO 1140 2004	14	220	4010
Nylon White 3 strand	EN ISO 1140 2004	16	220	5300
Nylon White 3 strand	EN ISO 1140 2004	18	220	6700
Nylon White 3 strand	EN ISO 1140 2004	20	220	8300
Nylon White 3 strand	EN ISO 1140 2004	24	220	12000
Nylon White 3 strand	EN ISO 1140 2004	28	220	15800
Nylon White 3 strand	EN ISO 1140 2004	32	220	20000

## Staple Spun White Polypropylene 3 Strand



Description	Manufacturing Standard	Dia.	Length	MBL
		mm	mtrs	kg
Staple Spun White Polypropylene 3 strand	EN ISO 1346 2004	6	220	600
Staple Spun White Polypropylene 3 strand	EN ISO 1346 2004	8	220	1350
Staple Spun White Polypropylene 3 strand	EN ISO 1346 2004	10	220	2080
Staple Spun White Polypropylene 3 strand	EN ISO 1346 2004	12	220	2100
Staple Spun White Polypropylene 3 strand	EN ISO 1346 2004	14	220	3005
Staple Spun White Polypropylene 3 strand	EN ISO 1346 2004	16	220	3770
Staple Spun White Polypropylene 3 strand	EN ISO 1346 2004	18	220	4810
Staple Spun White Polypropylene 3 strand	EN ISO 1346 2004	20	220	5800
Staple Spun White Polypropylene 3 strand	EN ISO 1346 2004	24	220	8100
Staple Spun White Polypropylene 3 strand	EN ISO 1346 2004	28	220	10700
Staple Spun White Polypropylene 3 strand	EN ISO 1346 2004	32	220	13500
Staple Spun White Polypropylene 3 strand	EN ISO 1346 2004	36	220	16900
Staple Spun White Polypropylene 3 strand	EN ISO 1346 2004	40	220	20500

## Pure Manila 3 Strand Dark Brown



Description	Manufacturing Standard	Dia.	Length	MBL
		mm	mtrs	kg
Pure Manila 3 strand Dark Brown	EN ISO 1181 2004	6	220	290
Pure Manila 3 strand Dark Brown	EN ISO 1181 2004	8	220	540
Pure Manila 3 strand Dark Brown	EN ISO 1181 2004	10	220	700
Pure Manila 3 strand Dark Brown	EN ISO 1181 2004	12	220	1070
Pure Manila 3 strand Dark Brown	EN ISO 1181 2004	14	220	1460
Pure Manila 3 strand Dark Brown	EN ISO 1181 2004	16	220	2030
Pure Manila 3 strand Dark Brown	EN ISO 1181 2004	18	220	2450
Pure Manila 3 strand Dark Brown	EN ISO 1181 2004	20	220	3250
Pure Manila 3 strand Dark Brown	EN ISO 1181 2004	24	220	4600
Pure Manila 3 strand Dark Brown	EN ISO 1181 2004	28	220	6100
Pure Manila 3 strand Dark Brown	EN ISO 1181 2004	32	220	7900
Pure Manila 3 strand Dark Brown	EN ISO 1181 2004	36	220	9600
Pure Manila 3 strand Dark Brown	EN ISO 1181 2004	40	220	12000

## White Sisal 3 Strand



Description	Manufacturing Standard	Dia.	Length	MBL
		mm	mtrs	kg
White Sisal 3 strand		6	220	260
White Sisal 3 strand		8	220	480
White Sisal 3 strand		10	220	630
White Sisal 3 strand		12	220	950
White Sisal 3 strand		14	220	1280
White Sisal 3 strand		16	220	1800
White Sisal 3 strand		18	220	2140
White Sisal 3 strand		20	220	2840
White Sisal 3 strand		24	220	4100
White Sisal 3 strand		28	220	5300
White Sisal 3 strand		32	220	6900
White Sisal 3 strand		36	220	8700
White Sisal 3 strand		40	220	10500

## Eb Composite Floating

**General:** 8 strand rope, squareline construction made of high tenacity Polypropylene Multifilament fibres and Polyester mix. During the manufacturing process the fibres are twisted in a way which gives greater resistance to friction, maintaining its floating properties. Available in 24 m/m to 128 m/m.

**Colour:** White. Other colors on request.

**Finish:** On request, it can be supplied with:

- Thimbles
- Spliced eyes

### Applications:

- Mooring
- Towing
- Fishing

### Characteristics:

- Raw material: Polypropylene Multifilament and Polyester
- Specific gravity 0.98.
- Approximate water absorption from 0.5 to 2%
- Floatability
- Spliceable
- Good flexibility
- Minimum UV degradation
- Medium abrasion resistance



Diameter	Circumference	Weight	Breaking load
mm	inches	gr/m	daN
24	3	283	10228
26	3 1/4	332	11927
28	3 1/2	386	13751
30	3 3/4	443	15699
32	4	504	17770
34	4 1/4	569	19964
36	4 1/2	637	22279
38	4 3/4	710	24717
40	5	787	27275
42	5 1/4	868	29954
44	5 1/2	952	32753
46	5 3/4	1041	35671
48	6	1133	38709
50	6 1/4	1230	41865
52	6 1/2	1330	45140
54	6 3/4	1434	48532
56	7	1542	52043
60	7 1/2	1771	59415
64	8	2015	67254
68	8 1/2	2274	75557
72	9	2550	84321
76	9 1/2	2841	93546
80	10	3148	103229
84	10 1/2	3471	113368
88	11	3809	123960
92	11 1/2	4163	135006
96	12	4533	146502
100	12 1/2	4919	158448
104	13	5320	170842
108	13 1/2	5737	183682
112	14	6170	196968
120	15	7083	224869
128	16	8059	254537

## Eb Composite Sinking

**General:** 8 strand rope, squareline construction made of high tenacity Polypropylene Multifilament fibres and Polyester. During the manufacturing process the fibres are twisted in a way which gives greater resistance to friction, maintaining its floating properties. It is produced from 24 m/m to 128 m/m.

**Colour:** White blue fleck. Other colors on request.

**Finish:** On request, it can be supplied with:

- Thimbles
- Spliced eyes

### Applications:

- Mooring
- Towing
- Fishing

### Characteristics:

- Raw material: Polypropylene Multifilament and Polyester
- Specific gravity 0.99
- Approximate water absorption from 0.5 to 2%
- Floatability
- Good flexibility
- Minimum UV degradatio
- Medium abrasion resistance
- Spliceable



Circumference	Weight	Breaking load
inches	gr/m	daN
3	298	10801
3 1/4	349	12646
3 1/2	405	14633
3 3/4	465	16764
4	529	19036
4 1/4	597	21451
4 1/2	670	24007
4 3/4	746	26705
5	827	29545
5 1/4	912	32525
5 1/2	1001	35646
5 3/4	1094	38908
6	1191	42311
6 1/4	1292	45854
6 1/2	1398	49537
6 3/4	1507	53360
7	1621	57323
7 1/2	1861	65668
8	2117	74570
8 1/2	2390	84029
9	2679	94043
9 1/2	2985	104612
10	3308	115734
10 1/2	3647	127409
11	4003	139636
11 1/2	4375	152415
12	4763	165743
12 1/2	5169	179622
13	5590	194049
13 1/2	6029	209025
14	6483	224549
15	7443	257238
16	8468	292110

# SteelSafe

**General:** 12 strand braided rope made of high modulus Polyethylene fibres, 100% Dyneema® (UHMW). It is a great light weight rope to replace steel wire due to its high resistance, flexibility and security. For more protection, it can be supplied with a Polyester or Polyamide cover. It is produced from 6 m/m to 80 m/m.

**Colour:** Other colors on request.



## Finish:

On request, it can be supplied with:

- Thimbles
- Spliced eyes

## Applications:

- Mooring
- Towing
- Pilot lines
- Guides

## Characteristics:

- Raw material: Polyethylene, 100% Dyneema® (UHMW)
- Specific gravity 0.97
- Approximate water absorption 0.1%
- Floatability
- Good flexibility
- Medium resistance to UV exposure
- Good abrasion resistanc.
- Spliceabl.
- Torsionally stable
- Heat treated
- Melting point 140° C
- Maximum temperature 70 ° C

Diameter	Circumference	Weight	Breaking load
mm	inches	gr/m	daN
6	3/4	22	3068
8	1	39	5455
10	1 1/4	61	10879
12	1 1/2	90	16014
14	1 3/4	122	21876
16	2	160	27519
18	2 1/4	204	35080
20	2 1/2	261	41355
22	2 3/4	316	50039
24	3	376	58310
26	3 1/4	423	65602
28	3 1/2	491	74464
30	3 3/4	564	81765
32	4	600	87007
34	4 1/4	677	98223
36	4 1/2	701	102803
38	4 3/4	846	111539
40	5	916	120737
42	5 1/4	1009	133113
44	5 1/2	1090	143791
46	5 3/4	1192	157160
48	6	1298	171124
50	6 1/4	1408	185681
52	6 1/2	1523	200833
54	6 3/4	1642	216578
56	7	1766	232918
60	7 1/2	1995	246659
64	8	2261	279502
68	8 1/2	2552	315531
72	9	2861	330162
76	9 1/2	3188	367865
80	10	3533	407607

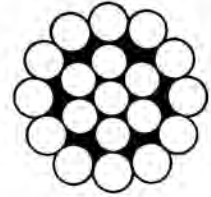


## Wire Rope

We can supply stainless steel wire rope in a variety of different constructions and sizes. Our wire rope is manufactured in Europe, from high quality European AISI 316 stainless steel grade 1.4401 polished wire in the fully austenitic condition to give maximum corrosion resistance. Dyform Compacted Strand is available in sizes 10mm – 19mm from stock.

Dimensions and tensile grades conform to EN 12385 and EN 10264 which stipulate tolerances on nominal diameter and minimum tensile strength for wire sizes and minimum breaking forces for strands and ropes. Our stainless steel wire rope can be provided cut to length or as full reels.

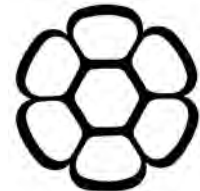
### Construction 1x19



zS sZ zZ sS

Product Code	Diameter	M.B.L	M.B.L	Weight
	mm	kN	kg	kg/100m
WR01(1x19)	1	0,87	99	0,49
WR015(1x19)	1,5	1,86	190	1,11
WR02(1x19)	2	3,3	337	1,98
WR025(1x19)	2,5	5,15	525	3,1
WR03(1x19)	3	7,42	757	4,46
WR035(1x19)	3,5	10,1	1.030	6,07
WR04(1x19)	4	13,2	1.350	7,93
WR05(1x19)	5	20,6	2.100	12,4
WR06(1x19)	6	29,7	3.030	17,8
WR07(1x19)	7	37,8	3.850	24,3
WR08(1x19)	8	49,4	5.040	31,7
WR10(1x19)	10	77,2	7.870	49,5
WR12(1x19)	12	104	10.600	71,3
WR14(1x19)	14	139	14.174	97,1
WR16(1x19)	16	181	18.457	127
WR19(1x19)	19	233	23.751	176
WR22(1x19)	22	299	30.479	236
WR26(1x19)	26	416	42.405	330

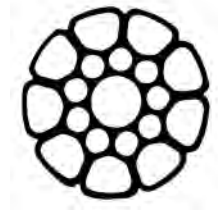
### Construction Compacted Strand 1x7



sZ

Product Code	Diameter	Construction	M.B.L	M.B.L	Weight
	mm		kN	kg	kg/100m
WR02(1x7)-C	2	1x7	4,11	440	2,2
WR025(1x7)-C	2,5	1x7	6,76	690	3,4
WR03(1x7)-C	3	1x7	9,81	1.000	4,9
WR035(1x7)-C	3,5	1x7	13,33	1.360	6,8
WR04(1x7)-C	4	1x7	17,46	1.780	8,8

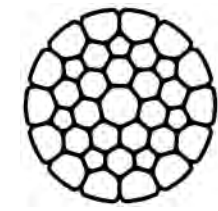
## Construction Compacted Strand 1x19



SZ

Product Code	Diameter	Construction	M.B.L	M.B.L	Weight
	mm		kN	kg	kg/100m
WR04(1x19)-C	4	1x19	17,46	1.780	9,1
WR05(1x19)-C	5	1x19	25,49	2.600	14,2
WR06(1x19)-C	6	1x19	35,29	3.600	20,5
WR07(1x19)-C	7	1x19	49,02	5.000	27,9
WR08(1x19)-C	8	1x19	61,76	6.300	36,5
WR10(1x19)-C	10	1x19	98,04	10.000	57
WR12(1x19)-C	12	1x19	143,15	14.500	82,1

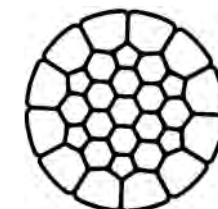
## Construction Compacted Strand 1x36



SZ

Product Code	Diameter	Construction	M.B.L	M.B.L	Weight
	mm		kN	kg	kg/100m
WR14(1x36)-C	14	1x36	194,11	19.800	115
WR16(1x36)-C	16	1x36	253,92	25.900	149,9

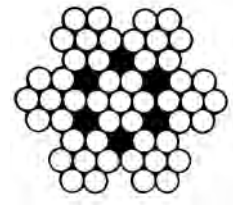
## Construction Compacted Strand 1x31



SZ

Product Code	Diameter	Construction	M.B.L	M.B.L	Weight
	mm		kN	kg	kg/100m
WR19(1x31)-C	19	1x31	313,92	32.000	206

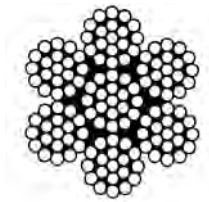
## Construction 7x7



zS sZ zZ sS

Product Code	Diameter	M.B.L	M.B.L	Weight
	mm	kN	kg	kg/100m
WR01(7x7)	1	0,56	57	0,38
WR012(7x7)	1,2	1,13	115	0,5
WR015(7x7)	1,5	1,26	128	0,86
WR018(7x7)	1,8	1,82	186	1,3
WR02(7x7)	2	2,24	228	1,54
WR025(7x7)	2,5	3,49	356	2,4
WR03(7x7)	3	5,03	513	3,46
WR04(7x7)	4	8,94	912	6,14
WR05(7x7)	5	14	1.430	9,6
WR06(7x7)	6	20,1	2.050	13,8
WR07(7x7)	7	27,4	2.790	18,8
WR08(7x7)	8	35,8	3.650	24,6
WR10(7x7)	10	55,9	5.700	38,4
WR012(7x7)	12	81,1	8.270	55,3
WR14(7x7)	14	109,84	11.200	82,32
WR16(7x7)	16	144,16	14.700	107,52
WR18(7x7)	18	182,4	18.600	131,32

## Construction 7x19



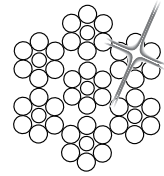
zS sZ zZ sS

Product Code	Diameter	M.B.L	M.B.L	Weight
	mm	kN	kg	kg/100m
WR015(7x19)	1,5	1,25	128	0,9
WR02(7x19)	2	2,08	212	1,49
WR025(7x19)	2,5	3,26	332	2,33
WR03(7x19)	3	4,69	478	3,35
WR035(7x19)	3,5	6,39	652	4,56
WR04(7x19)	4	8,34	850	5,95
WR05(7x19)	5	13	1.330	9,3
WR06(7x19)	6	18,8	1.920	13,4
WR07(7x19)	7	25,5	2.600	18,2
WR08(7x19)	8	33,4	3.410	23,8
WR10(7x19)	10	52,1	5.310	37,2
WR12(7x19)	12	75,1	7.660	53,6
WR14(7x19)	14	102	10.100	72,9
WR16(7x19)	16	133	13.600	95,5

## SS 6x7-WSC

**Typical applications:** Rigging, stays, controls and signalling devices.

**Material:** AISI 316.



sZ zS zZ sS SS\*

F-faktor  
0,55

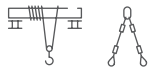
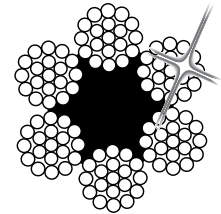
Rope	Steel	Min breaking force	Mass
Ø mm	area mm <sup>2</sup>	1570N/mm <sup>2</sup> kN	kg/100m
1,8	1,40	1,97	1,2
2	1,73	2,44	1,5
2,3	2,29	3,22	2
2,5	2,70	3,81	2,4
3	3,89	5,48	3,5
4	6,91	9,75	6,1
5	10,8	15,2	9,6
6	15,6	21,9	14
7	21,2	29,8	19
8	27,6	39	25
9	35	49,3	31
10	43,2	60,9	38
12	62,2	87,7	55

## SS 6x19-FC

**Typical applications:** Cranes, hoist blocks, lifts, wire rope slings.

**Material:** AISI 316.

**Standard:** EN 12385-4.



sZ zS zZ sS SS\*

F-faktor  
0,45

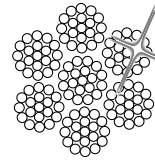
RCN  
04

Rope	Steel	Min breaking force	Mass
Ø	area	1570N/mm <sup>2</sup> kN	kg/
mm	mm <sup>2</sup>		100m
3	3,21	4,34	3,1
4	5,71	7,71	5,5
5	8,93	12	8,7
6	12,9	17,4	13
7	17,5	23,6	17
8	22,8	30,8	22
9	28,9	39	28
10	35,7	48,2	35
12	51,4	69,4	50

## SS 6x19-WSC

**Typical applications:** Cranes, winches, hoist blocks, wire rope slings, controls and signal devices.

**Material:** AISI 316.



SZ

ZS

ZZ

SS

SS\*

F-faktor  
0,53

RCN  
04

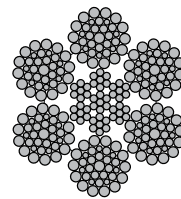
Rope	Steel area	Min breaking force	Mass
Ø mm	mm <sup>2</sup>	1570N/mm <sup>2</sup> kN	kg/100m
2	1,67	2,27	1,5
3	3,76	5,12	3,4
4	6,69	9,09	6,1
5	10,5	14,2	9,5
6	15	20,5	14
7	20,5	27,8	19
8	26,8	36,4	24
9	33,9	46,0	31
10	41,8	56,8	38
11	50,6	68,8	46
12	60,2	81,8	55
13	70,6	96,0	64
14	81,9	111	75
15	94,1	128	86
16	107	145	98
18	135	184	123
20	167	227	152

## SS 6x36 IWRC

**Design:** Cross lay right-handed, alternative design on request.

**Construction:** 6x36 IWRC.

**Material:** AISI 316/1570 N/mm<sup>2</sup>.



SZ

ZS

ZZ

SS

SS\*

Rope Ø	Min. breaking force	Weight
mm	kN	kg/100m
8,0	36,60	27,00
10,0	56,90	42,00
12,0	80,60	60,20
13,0	94,80	70,70
14,0	109,00	82,00
15,0	125,80	94,50
16,0	142,00	107,00
18,0	180,00	135,00
20,0	221,00	167,00
24,0	321,00	241,00

# Swaging Systems

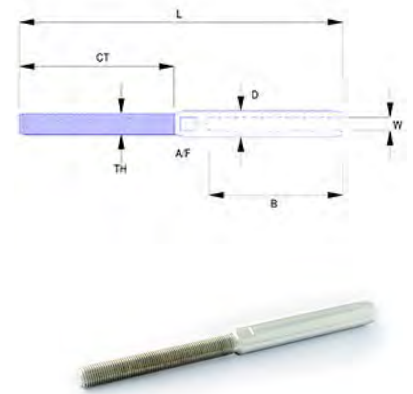
## Stainless Steel Swage Studs

### Product features:

- Machined from 316L stainless steel (1.4404)
- Available for standard wires sizes from 3mm up to 32mm
- Other sizes and custom lengths on request
- Excellent grain structure – resists corrosion and fatigue
- All CE marked and supplied with instruction leaflet on safe use and storage
- Swage studs are available for imperial wire sizes, please contact us for the correct part codes
- Components are available with left or right hand threads as well as UNF threads.

### Quality features:

- Inspection certificate BS EN 10204 3.1 available on request
- High quality finish and excellent polish
- No casting or welding
- Fatigue rated in accordance to EN13411-8
- Each terminal individually engraved with the test batch reference
- Factor of Safety 6:1



Item Codes	Wire W	Dimensions						WII	
		TH	D	B	L	CT	A/F	7X19 / 6X19-IWRC	6X36-IWRC
		mm						kg	
SCM6X3-EN	3	M6	6,3	39	97	47	5	70	-
SCM6X4-EN	4	M6	7,5	45	105	47	6	125	-
SCM8X4-EN	4	M8	7,5	45	113	54	6	125	-
SCM8X5-EN	5	M8	9,1	52	122	54	8	200	-
SCM10X5-EN	5	M10	9,1	52	135	64	8	200	-
SCM10X6-EN	6	M10	12,5	65	154	75	11	285	300
SCM12X6-EN	6	M12	12,5	65	170	90	11	285	300
SCM12X7-EN	7	M12	14,3	70	177	90	12	390	-
SCM12X8-EN	8	M12	16	80	190	90	14	510	545
SCM16X8-EN	8	M16	16	80	201	100	14	510	545
SCM16X10-EN	10	M16	18	100	223	100	16	795	855
SCM20X12-EN	12	M20	21,4	132	277	120	19	1150	1230
SCM22X14-EN	14	M22	25	156	325	140	22	1515	1675
SCM27X16-EN	16	M27	28,2	176	371	160	25	2040	2175
SCM30X19-EN	19	M30	34,5	210	427	184	30	-	-
SCM36X22-EN	22	M36	40,3	242	482	202	32	-	4125
SCM42X26-EN	26	M42	45,9	290	557	223	36	-	5415
SCM45X28-EN	28	M45	50	297	619	280	44	-	-
SCM49X32-EN	32	M45	58	335	661	290	50	-	-

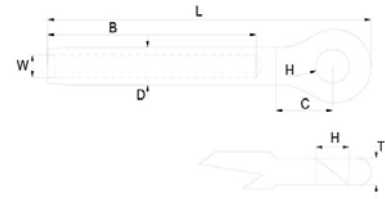
# Stainless Steel Swage Eyes

## Product features:

- Forged from 316L stainless steel (1.4404)
- Available for standard wires sizes from 3mm up to 32mm
- Other sizes and custom lengths on request
- Manufactured using the latest technology in electrical upset forging
- Excellent grain structure resists corrosion and fatigue
- All CE marked and supplied with instruction leaflet on safe use and storage
- Swage eyes are available for imperial wire sizes, please contact us for the correct part codes

## Quality features:

- Inspection certificate BS EN 10204 3.1 available on request
- High quality finish and excellent polish
- No casting or welding
- Fatigue rated in accordance to EN13411-8
- Each terminal individually engraved with the test batch reference
- Factor of Safety 6:1

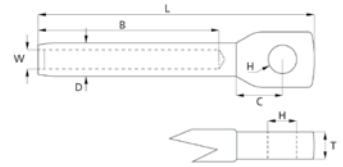


Item Codes	Wire W	Dimensions						WII	
		P	B	D	C	T	L	7X19 / 6X19-IWRC	6X36-IWRC
mm								kg	
SE03-EN	3	6,3	39	6,3	11	5	60	70	-
SE04-EN	4	8	45	7,5	14	6,5	72	125	-
SE05-EN	5	9,5	52	9,1	17	7,8	84	200	-
SE06-EN	6	11,1	64	12,5	20	9,5	102	285	300
SE07-EN	7	12,7	70	14,3	23	11,5	113	390	-
SE08DS-EN	8	12,7	80	16	23	11,5	125	510	-
SE08-EN	8	14,3	80	16	24	13,5	128	510	545
SE08US-EN	8	16	80	16	29	15	136	510	545
SE10-EN	10	16	100	18	29	15	155	795	855
SE12-EN	12	19,1	132	21,4	34	17,5	197	1150	1230
SE14-EN	14	22,2	156	25	40	21,5	232	1515	1675
SE16-EN	16	25,4	176	28,2	46	23,5	232	2040	2175
SE19-EN	19	29	210	34,5	51	27	307	-	-
SE22-EN	22	32,2	242	40,3	55,5	30	354	-	4125
SE26-EN	26	35,2	290	45,9	59,2	33	417,2	-	5415
SE28-EN	28	45,4	312	50	72	42	464,1	-	-
SE32-EN	32	51,6	335	58	83,3	49	507	-	-

Note: Sizes up to 16mm have forged heads, sizes 19mm and above have machined heads

# Stainless Steel Swage Terminals Machined Swage Eyes

**General:** 316 swage eyes are forged from low carbon stainless steel 316L (1.4404), every marine swage eye is incredibly strong, these swage eyes can be used with many different wire rope constructions and spiral strand.



Product Code	Wire	H	B	D	C	T	L	Nominal Weight
				mm				g
MSE04	4	6.35	45	7.5	14	6.5	72	23
MSE05	5	8.0	52	9.1	17	7.8	85	42
MSE06	6	9.53	64	12.5	20	9.5	103	100
MSE06US	6	11.1	64	12.5	23	11.5	110	109
MSE07	7	12.7	70	14.3	23	11.5	114	129
MSE08DS	8	12.7	80	16.0	23	11.5	123	152
MSE08	8	14.28	80	16.0	24	13.5	130	178
MSE08US	8	16.0	80	16.0	29	15	134	202
MSE10	10	16.0	100	18.0	29	15	155	245
MSE12	12	19.05	132	21.4	34	17.5	197	462
MSE14	14	22.2	156	25.0	40	21.5	235	721
MSE16	16	25.4	176	28.2	46	23.5	264	1090
MSE16US	16.8	28.6	176	28.2	51	27	274	1430
MSE19	19	28.6	210	34.5	51	27.5	308	1780
MSE22	22	32.0	242	40.3	58	31	356	2704
MSE26	26	35.0	290	45.9	63	33.5	414	3855g



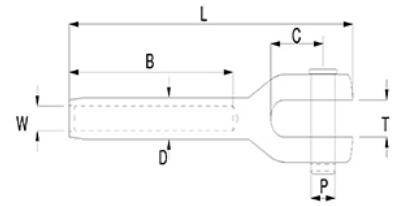
# Stainless Steel Swage Forks

## Product features:

- Machined from 316L stainless steel (1.4404)
- Available for standard wires sizes from 3mm up to 32mm
- Other sizes and custom lengths on request
- Excellent grain structure – resists corrosion and fatigue
- All CE marked and supplied with instruction leaflet on safe use and storage
- Swage forks are available for imperial wire sizes, please contact us for the correct part codes

## Quality features:

- Inspection certificate BS EN 10204 3.1 available on request
- High quality finish and excellent polish
- No casting or welding
- Fatigue rated in accordance to EN13411-8
- Each terminal individually engraved with the test batch reference
- Factor of Safety 6:1



Item Codes	Wire W	Dimensions						WII	
		P	D	CF	T	B	L	7X19 / 6X19-IWRC	6X36-IWRC
							mm	kg	
SF03-EN	3mm	6	6,3	12,5	6,2	39	70	70	-
SF04 EN	4mm	8	7,5	17	7,9	45	83	125	-
SF05 EN	5mm	9,5	9,1	19	9,9	52	97	200	-
SF06 EN	6mm	11	12,5	22	10,9	64	113	285	300
SF07 EN	7mm	12	14,3	25	12,7	70	128	390	-
SF08DS EN	8mm	12	16	25	12,7	80	140	510	545
SF08 EN	8mm	14	16	28	13,8	80	144,5	510	545
SF10 EN	10mm	16	18	32	15,8	100	174	795	855
SF12 EN	12mm	19	21,4	38	17,8	132	227	1150	1230
SF14 EN	14mm	22	25	45	22	156	258	1515	1675
SF16 EN	16mm	25	28,2	50	25	176	295,5	2040	2175
SF18 EN	18mm	28	34,5	58	28,2	210	342	-	-
SF19 EN	19mm	28	34,5	58	28,2	210	342	-	-
SF20 EN	22mm	32	40,3	64	31,8	242	391	-	-
SF22 EN	22mm	32	40,3	64	31,8	242	391	-	4125
SF26 EN	26mm	35	45,9	70	34,8	290	451,5	-	5415
SF28 EN	28mm	44	50	88	44	305	514,1	-	-
SF32-EN	32mm	51,1	58	108,5	52	335	598	-	-

## Stainless Steel Swage Terminals Swage Strap Toggle

**General:** 316 swage toggles are forged from low carbon stainless steel 316L (1.4404), every marine swage toggle is incredibly strong, these swage toggles can be used with many different wire rope constructions and spiral strand.



Product Code	Wire	P	D	C	T	B	L	Nominal Weight
mm								g
MST03	3	6.0	6.3	14	8	39	84	25
MST04	4	8.0	7.5	19	9	45	103	45
MST05	5	9.5	9.1	21	11	52	111	89
MST06	6	11.0	12.5	25	13	64	146	230
MST07	7	12.7	14.3	26	15	70	168	271
MST08DS	8	12.7	16.0	26	15	80	169	295
MST10	10	16.0	18.0	38	19	100	212	569
MST12	12	19.0	21.4	38	22	132	278	1409
MST14	14	22.0	25.0	52	25	156	328	1912
MST16	16	25.0	28.2	66	28	176	364	2516
MST19	19	28.0	34.5	68	32	210	430	4147
MST22	22	32.0	40.3	83	35	242	496	6039
MST26	26	35.0	45.9	97	38	290	571	8428

## Stainless Steel Swage Terminals Swage Shackle Toggle

**General:** 316 swage shackles are forged from low carbon stainless steel 316L (1.4404), every marine swage shackle toggle is incredibly strong, these shackle toggles can be used with many different wire rope constructions and spiral strand. All Hi-MOD products are produced to a high degree of quality control, using modern lean manufacturing processes, resulting in a reliable and consistent product.



Product Code	Wire	P	D	B	SB	SL	S	J	L	Nominal Weight
mm										g
SST03	3	6.0	6.3	39	5.0	14	3	14	82	25
SST04	4	8.0	7.5	45	6.0	16	4	20	101	48
SST05	5	9.5	9.1	52	8.0	22	4	22	118	89
SST06	6	11.0	12.7	64	9.5	27	5	25	141	179
SST07	7	12.7	14.3	70	11.0	32	5	27	158	273
SST08	8	14.0	16.0	80	12.7	36	5	29	179	407
SST10	10	16.0	18.0	100	14.3	42	6	29	216	684
SST12	12	19.0	21.4	132	16.0	45	6	32	263	1027
SST14	14	22.0	25.0	156	19.0	63	8	38	309	1508
SST16	16	25.4	28.2	176	22.0	63	8	45	351	2525

## Compression Fittings

### Swageless Compression Terminal Eye End

**General:** Hi-MOD swageless compression fittings are at least as strong as the rated breaking load of the wire rope. The unique star shaped crown ring positions and holds the wires in place, eliminating the requirement for awkward wire end bending. The shallow angled cone establishes direct mechanical grip on the core and all the outer strands. Stainless steel grade EN10088 1.4404 (316L) is used on all parts with the exception of the crown ring which is manufactured from aluminium bronze so no sealant required.

Fittings are available for 7 strand and compacted strand wire ropes as well as 1x7 and 1x19. Because of their design, Hi-MOD swageless compression fittings can be assembled on compacted strand ropes as easily as any other construction of wire, without the need for forming tools and long handled spanners.



Product Code	Wire	H	C	L	T	A/F	Nominal Weight
mm							g
CTE03	3	6.35	11	22	5	9.5	21
CTE04	4	8	14	28	6.5	11	39
CTE04US	4	9.53	16	36	7.8	14	60
CTE05	5	9.53	17	32	7.8	14	65
CTE06	6	11.1	20	38	9.5	17	126
CTE06US	6	12.7	23	43	11.5	17	140
CTE07	7	12.7	23	45	11.5	20	165
CTE08DS	8	12.7	23	48	11.5	22	235
CTE08	8	14.28	24	52	13.5	22	355
CTE08US	8	16	29	56	15	22	390
CTE10	10	16	29	59	15	26	462
CTE10US	10	19.05	34	65	17.5	26	600
CTE11	11	19.05	34	65	18	26	600
CTE12	12	19.05	34	79	17.5	32	912
CTE14	14	22.2	40	86	21.5	36	1344
CTE16	16	25.4	46	94	23.5	40	1867
CTE19	19	28.58	51	98	27.5	44	2227
CTE22	22	32	58	108	31	52	3440

Suffix -C after product code for compacted strand wire or -7 for 7x7 strand wire.

## Swageless Compression Terminal Fork End

**General:** Special star shaped crown ring holds wire strands in place, preventing awkward “wire end bending”. Crown ring prevents wire strands from being trapped in cone slots. Works equally well with right or left hand lay wire, shallow angle on cone establishes more direct mechanical contact over a greater area providing a tighter grip. Can be dismantled for maintenance and re-used without the need for new parts. All parts are reusable providing that no over-loading has occurred.



Product Code	Wire	P	C	T	L	A/F B	Nominal Weight
							g
CTF03	3	6	12.5	6.2	30	9.5	29
CTF04	4	8	17	7.9	40	11	60
CTF05	5	9.5	19	9.9	47	14	103
CTF06	6	11	22	10.9	50	19	159
CTF07	7	12	25	12.7	58	20	239
CTF08DS	8	12	25	12.7	63	22	323
CTF08	8	14	28	13.8	70	22	395
CTF08US	8	16	32	15.8	72	22	490
CTF10	10	16	32	15.8	78	26	542
CTF12	12	19	38	17.8	93	32	918
CTF14	14	22	45	22	106	36	1464
CTF16	16	25	50	25	126	40	2125
CTF19	19	28	58	28.2	133	44	2616
CTF22	22	32	64	31.8	146	52	3890
CTF26	26	35	70	34.8	167	64	6393

Suffix -C after product code for compacted strand wire or -7 for 7x7 strand wire.

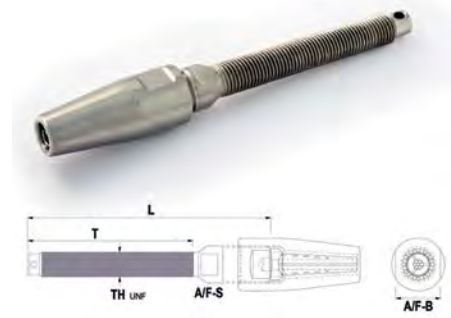
## Swageless Compression Terminal Toggle End



Product Code	Wire	P	C	T	L	A/F	Nominal Weight
							g
CTT03	3	6.0	14	8	45	9.5	37
CTT04	4	8.0	20	9	53	11	71
CTT05	5	9.5	21	11	64	14	125
CTT06	6	11	25	13	78	19	258
CTT07	7	12.7	27	15	89	20	327
CTT08DS	8	12.7	27	15	92	22	397
CTT08US	8	16	38	19	116	22	700
CTT10	8	16	38	19	116	26	800
CTT12	10	19	44	22	157	32	1242
CTT14	12	22	53	25	174	36	2302
CTT16	14	25	63	28	194	40	3037
CTT19	16	28	67	32	215	44	4280
CTT22	19	32	83	35	235	52	6518
CTT26	22	35	97	38	296	64	9591

Suffix -C after product code for compacted strand wire or -7 for 7x7 strand wire.

# Swageless Compression Terminal Threaded End – Imperial Threads



Product Code	Wire	Thread	T	L	A/F S	A/F B	Nominal Weight
	mm	unf					
CTS03	3	1/4"	47	68	6	9.5	24
CTS04DS	4	1/4"	47	68	8	11	35
CTS04	4	5/16"	54	77	8	11	42
CTS04US	4	3/8"	68	87	8	11	58
CTS05DS	5	5/16"	54	82	9	14	65
CTS05	5	3/8"	68	91	9	14	75
CTS05US	5	7/16"	75	97	9	14	85
CTS06DS	6	3/8"	68	97	11	17	110
CTS06	6	7/16"	75	101	11	17	130
CTS06US	6	1/2"	90	119	11	17	145
CTS07	7	1/2"	90	121	14	20	199
CTS08DS	8	1/2"	90	129	16	22	297
CTS08	8	5/8"	100	137	16	22	347
CTS10	10	5/8"	100	143	17	26	458
CTS10US	10	3/4"	120	163	19	26	790
CTS11	11	3/4"	120	163	19	26	790
CTS12	12	3/4"	120	173	22	32	892
CTS14	14	7/8"	140	201	24	36	1379
CTS16	16	1"	160	232	28	40	1970
CTS19	19	1 1/8"	180	250	32	44	2699
CTS22	22	1 1/4"	200	277	36	52	4240
CTS26	26	1 3/8"	220	320	44	64	6675

Suffix -C after product code for compacted strand wire or -7 for 7x7 strand wire.

# Turnbuckles & Rigging Screws

## Turnbuckle Bodies Open and Closed Design

**General:** Old fashioned turnbuckle bodies are manufactured by forging a soft bronze to produce the desired shape. The turnbuckle body is machined from naval grade, ultrasonically inspected aluminium bronze. Using this process has allowed a 20% weight reduction without compromising strength. Each body is individually hand polished and chrome plated to give an excellent finish. Our closed 'rigging screw' body is made from stainless steel grade 316L. Sizes up to 1/2" are manufactured from seamless (no welds) pressure-tube. Sizes 5/8" and above have aluminium bronze thread inserts to prevent galling. Closed bodies can be slotted to allow locking with split pins.



Thread	Nominal Wire Size	TYPE CB			TYPE HT			TYPE GT		
		OD	L	Weight	OD	L	Weight	OD	L	Weight
UNF	mm	mm	mm	g	mm	mm	g	mm	mm	g
1/4" unf	3	9.5	86	20	-	-	-	10.9	86	34
5/16" unf	4	12	98	36	-	-	-	13.8	119	62
3/8" unf	5	15	124	72	-	-	-	15.8	147	98
7/16" unf	6	17	136	102	-	-	-	18.8	163	148
1/2" unf	7	19	164	164	-	-	-	21.9	203	252
5/8" unf	8/10	25.4	210	454	-	-	-	28.0	228	508
3/4" unf	12	28.5	248	626	-	-	-	31.6	265	736
7/8" unf	14	35	278	955	44.2	316	1252	37.7	310	1149
1" unf	16	38	332	1264	50.5	361	2257	43.6	356	1875
1 1/8" unf	19	44.5	369	2250	56.8	406	3202	49.5	401	2731
1 1/4" unf	22	50.8	400	3290	63.1	451	4269	53.8	443	3425
1 3/8" unf	26	54	460	4337	69.5	496	5846	59.8	476	4766

The product code for a turnbuckle body is the body type followed by the thread size for example CB5/16 or GT11/4

## Turnbuckles GT Body with Swage Stud and Toggle



Product Code	Wire	Thread	P	C	T	MIN L	MAX L
	mm	unf					
GTST03	3	1/4"	6.0	14.0	8.0	148.5	220.5
GTST04DS	4	1/4"	6.0	14.0	8.0	149.5	221.5
GTST04	4	5/16"	8.0	20.0	9.0	177.5	257.5
GTST04US	4	3/8"	9.5	21.0	11.0	214.5	318.5
GTST05DS	5	5/16"	8.0	20.0	9.0	180.5	260.5
GTST05	5	3/8"	9.5	21.0	11.0	214.5	318.5
GTST05US	5	7/16"	11.0	25.0	13.0	235.5	347.5
GTST06DS	6	3/8"	9.5	21.0	11.0	217.5	321.5
GTST06	6	7/16"	11.0	25.0	13.0	237.5	349.5
GTST06US	6	1/2"	12.7	27.0	15.0	286.0	426.0
GTST07	7	1/2"	12.7	27.0	15.0	286.0	426.0
GTST08DS	8	1/2"	12.7	27.0	15.0	289.0	429.0
GTST08US	8	5/8"	16.0	38.0	19.0	339.5	489.5
GTST10	10	5/8"	16.0	38.0	19.0	341.5	491.5
GTST10US	10	3/4"	19.0	44.0	22.0	391.5	571.5
GTST12	12	3/4"	19.0	44.0	22.0	393.0	573.0
GTST14	14	7/8"	22.0	53.0	25.0	457.5	667.5
GTST16	16	1"	25.0	63.0	28.0	529.0	769.0
GTST19	19	1 1/8"	28.0	67.0	32.0	588.0	858.0
GTST22	22	1 1/4"	32.0	83.0	35.0	662.5	962.5
GTST26	26	1 3/8"	35.0	97.0	38.0	727.0	1047.0

# Turnbuckles GT Body with Compression Stud and Toggle



Product Code	Wire	Thread	P	C	T	MIN L	MAX L	Nominal Weight
	mm	unf			mm			g
GTCT03	3	1/4"	6.0mm	14.0	8.0	157.5	229.5	104
GTCT04DS	4	1/4"	6.0mm	14.0	8.0	158.0	230.0	175
GTCT04	4	5/16"	8.0mm	20.0	9.0	185.5	265.5	190
GTCT04US	4	3/8"	9.5mm	20.0	11.0	216.5	320.5	245
GTCT05DS	5	5/16"	8.0mm	20.0	9.0	190.5	270.5	285
GTCT05	5	3/8"	9.5mm	21.0	11.0	221.0	325.0	303
GTCT05US	5	7/16"	11.0mm	25.0	13.0	246.0	358.0	394
GTCT06DS	6	3/8"	9.5mm	21.0	11.0	226.5	330.5	365
GTCT06	6	7/16"	11.0mm	25.0	13.0	249.5	361.5	516
GTCT06US	6	1/2"	12.7mm	27.0	15.0	306.0	446.0	667
GTCT07	7	1/2"	12.7mm	27.0	15.0	307.5	447.5	759
GTCT08DS	8	1/2"	12.7mm	27.0	15.0	315.5	455.5	851
GTCT08US	8	5/8"	16.0mm	38.0	19.0	358.0	508.0	1265
GTCT10	10	5/8"	16.0mm	38.0	19.0	363.5	513.5	1505
GTCT10US	10	3/4"	19.0mm	44.0	22.0	419.5	599.5	2359
GTCT12	12	3/4"	19.0mm	44.0	22.0	428.0	608.0	2488
GTCT14	14	7/8"	22.0mm	53.0	25.0	497.0	707.0	4283
GTCT16	16	1"	25.0mm	63.0	28.0	571.5	811.5	4659
GTCT19	19	1 1/8"	28.0mm	67.0	32.0	635.5	905.5	7465
GTCT22	22	1 1/4"	32.0mm	83.0	35.0	702.0	1002.0	12458
GTCT26	26	1 3/8"	35.0mm	97.0	38.0	784.5	1104.5	16985

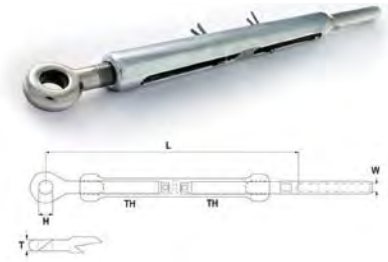
## Turnbuckles GT Body with Swage Stud and Toggle



Product Code	Wire	Thread	P	C	T	MIN L	MAX L
	mm	unf			mm		
GTST03	3	1/4"	6.0	14.0	8.0	148.5	220.5
GTST04DS	4	1/4"	6.0	14.0	8.0	149.5	221.5
GTST04	4	5/16"	8.0	20.0	9.0	177.5	257.5
GTST04US	4	3/8"	9.5	21.0	11.0	214.5	318.5
GTST05DS	5	5/16"	8.0	20.0	9.0	180.5	260.5
GTST05	5	3/8"	9.5	21.0	11.0	214.5	318.5
GTST05US	5	7/16"	11.0	25.0	13.0	235.5	347.5
GTST06DS	6	3/8"	9.5	21.0	11.0	217.5	321.5
GTST06	6	7/16"	11.0	25.0	13.0	237.5	349.5
GTST06US	6	1/2"	12.7	27.0	15.0	286.0	426.0
GTST07	7	1/2"	12.7	27.0	15.0	286.0	426.0
GTST08DS	8	1/2"	12.7	27.0	15.0	289.0	429.0
GTST08US	8	5/8"	16.0	38.0	19.0	339.5	489.5
GTST10	10	5/8"	16.0	38.0	19.0	341.5	491.5
GTST10US	10	3/4"	19.0	44.0	22.0	391.5	571.5
GTST12	12	3/4"	19.0	44.0	22.0	393.0	573.0
GTST14	14	7/8"	22.0	53.0	25.0	457.5	667.5
GTST16	16	1"	25.0	63.0	28.0	529.0	769.0
GTST19	19	1 1/8"	28.0	67.0	32.0	588.0	858.0
GTST22	22	1 1/4"	32.0	83.0	35.0	662.5	962.5
GTST26	26	1 3/8"	35.0	97.0	38.0	727.0	1047.0

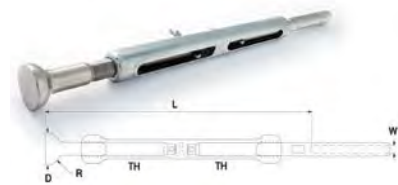


## Turnbuckles GT Body with Swage Stud and Eye



Product Code	Wire	Thread	H	T	Min L	Max L
	mm	unf			mm	
GTSE03	3	1/4"	6.35	5	127.0	199.0
GTSE04DS	4	1/4"	6.35	5	128.0	200.0
GTSE04	4	5/16"	8.0	6.5	149.5	229.5
GTSE04US	4	3/8"	9.53	7.8	182.0	286.0
GTSE05DS	5	5/16"	8.0	6.5	152.5	232.5
GTSE05	5	3/8"	9.53	7.8	182.0	286.0
GTSE05US	5	7/16"	11.1	9.5	196.5	308.5
GTSE06DS	6	3/8"	9.53	7.8	185.0	289.0
GTSE06	6	7/16"	11.1	9.5	198.5	310.5
GTSE06US	6	1/2"	12.7	11.5	244.5	384.5
GTSE07	7	1/2"	12.7	11.5	244.5	384.5
GTSE08DS	8	1/2"	12.7	11.5	247.5	387.5
GTSE08US	8	5/8"	14.28	15	284.5	434.5
GTSE10	10	5/8"	16.0	15	286.5	436.5
GTSE10US	10	3/4"	19.05	17.5	325.5	505.5
GTSE12	12	3/4"	19.05	17.5	327.0	507.0
GTSE14	14	7/8"	22.2	21.5	378.5	588.5
GTSE16	16	1"	25.4	23.5	435.0	675.0
GTSE19	19	1 1/8"	28.58	27.5	488.0	758.0
GTSE22	22	1 1/4"	32.0	31	543.5	843.5
GTSE26	26	1 3/8"	35.0	33.5	587.0	907.0

## Turnbuckles GT Body with Swage Stud and Stemball



Product Code	Wire	Thread	R	D	Min L	Max L
	mm	unf			mm	
GTSB03	3mm	1/4" unf	6.3mm	13mm	127mm	199mm
GTSB04	4mm	3/8" unf	8.8mm	17mm	128mm	200mm
GTSB05	5mm	3/8" unf	8.8mm	17mm	182mm	286mm
GTSB06	6mm	7/16" unf	10.8mm	21mm	198mm	310mm
GTSB07	7mm	1/2" unf	10.8mm	21mm	244mm	384mm
GTSB08DS	8mm	1/2" unf	13.8mm	27mm	250mm	390mm
GTSB08	8mm	5/8" unf	13.8mm	27mm	284mm	434mm
GTSB10	10mm	5/8" unf	15.8mm	31mm	287mm	437mm
GTSB12	12mm	3/4" unf	17.8mm	35mm	327mm	507mm

## Turnbuckles GT Body with Toggle and Fork



Product Code	Thread	P	ST	SC	FC	FT	Min L	Max L
	mm	unf			mm			
GTFT03	1/4"	6.0	7.7	14.0	13.0	6.3	157.5	229.5
GTFT04	5/16"	8.0	9.0	20	16.0	8.0	192.0	272.0
GTFT05	3/8"	9.5	10.3	21	19.0	10.0	231.5	335.5
GTFT06	7/16"	11	14.0	25	22.0	11.0	260.5	372.5
GTFT07	1/2"	12.7	15.0	27	25.0	12.7	318.0	458.0
GTFT08	5/8"	14	19.0	38	28.0	14.0	368.5	518.5
GTFT10	5/8"	16	19.0	36	32.0	16.0	380.5	530.5
GTFT12	3/4"	19	22.0	44	38.0	19.0	443.5	623.5
GTFT14	7/8"	22	24.0	53	45.0	22.2	512.0	722.0
GTFT16	1"	25	28.0	63	50.0	25.4	583.5	823.5
GTFT19	1 1/8"	28	32.0	67	58.0	28.6	661.0	931.0
GTFT22	1 1/4"	32	36.0	83	64.0	32.0	730.5	1030.5
GTFT26	1 3/8"	35	38.0	97	70.0	35.0	801.5	1121.5

## Rigging Screw Closed Body with Stud and Toggle



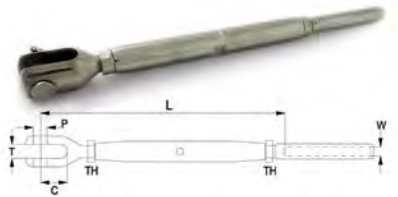
Product Code	Wire	Thread	P	C	T	MIN L	MAX L	Weight
	mm	unf			mm			g
RSST03	3	1/4"	6.0	14.0	8.0	139.5	209.5	76
RSST04DS	4	1/4"	6.0	14.0	8.0	140.5	210.5	77
RSST04	4	5/16"	8.0	19.0	9.0	167.5	245.5	140
RSST04US	4	3/8"	9.5	21.0	11.0	204.5	304.5	220
RSST05DS	5	5/16"	8.0	19.0	9.0	170.5	248.5	142
RSST05	5	3/8"	9.5	21.0	11.0	204.5	304.5	250
RSST05US	5	7/16"	11	26.0	13.0	227.5	335.5	254
RSST06DS	6	3/8"	9.5	21.0	11.0	207.5	307.5	253
RSST06	6	7/16"	11	26.0	13.0	229.5	337.5	430
RSST06US	6	1/2"	12.7	28.0	15.0	274.0	406.0	595
RSST07	7	1/2"	12.7	28.0	15.0	274.0	406.0	626
RSST08DS	8	1/2"	12.7	28.0	15.0	277.0	409.0	660
RSST08US	8	5/8"	16	37.0	19.0	348.5	504.5	1256
RSST10	10	5/8"	16	37.0	19.0	350.5	506.5	1389
RSST10US	10	3/4"	19	45.0	22.0	410.0	581.0	2021
RSST12	12	3/4"	19	45.0	22.0	411.5	582.5	2278
RSST14	14	7/8"	22	54.0	25.0	465.0	662.0	3803
RSST16	16	1"	25	64.0	28.0	541.5	780.5	5162
RSST19	19	1 1/8"	28	68.0	32.0	611.0	881.0	6098
RSST22	22	1 1/4"	32	84.0	35.0	664.5	948.5	9039
RSST26	26	1 3/8"	35	98.0	38.0	764.5	1088.5	16058

## Rigging Screw Closed Body with Compression Stud and Toggle



Product Code	Wire	Thread	P	C	T	Min L	Max L	Nominal Weight
	mm	unf			mm			g
RSCT03	3	1/4"	6.0	14.0	8.0	152	217	76
RSCT04	4	5/16"	8.0	18.0	9.0	173	246	146
RSCT05	5	3/8"	9.5	21.0	11.0	209	304	265
RSCT06	6	7/16"	11.0	25.0	13.0	263	338	452
RSCT07	7	1/2"	12.7	27.0	15.0	274	399	663
RSCT08DS	8	1/2"	12.7	27.0	15.0	282	407	761
RSCT08US	8	5/8"	16.0	36.0	19.0	360	508	1541
RSCT10	10	5/8"	16.0	36.0	19.0	365	513	1541
RSCT12	12	3/4"	19.0	45.0	22.0	436	598	2620
RSCT14	14	7/8"	22.0	53.0	25.0	489	676	4308
RSCT16	16	1"	25.0	62.0	28.0	573	802	5857
RSCT19	19	1 1/8"	28.0	63.0	32.0	641	900	6746
RSCT22	22	1 1/4"	32.0	76.0	35.0	692	963	10079
RSCT26	26	1 3/8"	35.0	92.0	38.0	805	1120	18733

## Rigging Screw Closed Body with Stud and Fork



Product Code	Wire	Thread	P	C	T	Min L	Max L	Nominal Weight
	mm	unf			mm			g
RSSF03	3	1/4"	6.0	12.5	6.2	125	195	79
RSSF04DS	4	1/4"	6.0	12.5	6.2	126	196	80
RSSF04	4	5/16"	8.0	17	7.9	150.5	228.5	151
RSSF04US	4	3/8"	9.5	19	9.9	184	284	152
RSSF05DS	5	5/16"	8.0	17	7.9	153.5	231.5	153
RSSF05	5	3/8"	9.5	19	9.9	184	284	257
RSSF05US	5	7/16"	11.0	22	10.9	200	308	260
RSSF06DS	6	3/8"	9.5	19	9.9	187	287	261
RSSF06	6	7/16"	11.0	22	10.9	202	310	386
RSSF06US	6	1/2"	12.0	25	12.7	236	368	450
RSSF07	7	1/2"	12.0	25	12.7	236	368	591
RSSF08DS	8	1/2"	12.0	25	12.7	239	371	625
RSSF08	8	5/8"	14.0	28	14.0	300	455	1185
RSSF08US	8	5/8"	16.0	32	15.8	310	466	1185
RSSF10	10	5/8"	16.0	32	15.8	312	468	1340
RSSF10US	10	3/4"	19.0	38	17.8	359.5	530.5	1950
RSSF12	12	3/4"	19.0	38	17.8	361	532	2218
RSSF14	14	7/8"	22.0	45	22.0	403	600	3376
RSSF16	16	1"	25.0	50	25.0	472	711	4925
RSSF19	19	1 1/8"	28.0	58	28.2	531	801	5318
RSSF22	22	1 1/4"	32.0	64	31.8	575	859	7711
RSSF26	26	1 3/8"	35.0	70	34.9	655	979	14085

## Rigging Screw Closed Body with Stud and Eye



Product Code	Wire	Thread	H	T	C	Min L	Max L	Nominal Weight
	mm	unf			mm			g
RSSE03	3	1/4"	6.35	5.0	11.0	115	185	62
RSSE04DS	4	1/4"	6.35	5.0	11.0	117	187	63
RSSE04	4	5/16"	8.0	6.5	14.0	140	215	106
RSSE05DS	5	5/16"	8.0	6.5	14.0	142	217	108
RSSE05	5	3/8"	9.53	7.8	17.0	170	270	194
RSSE06DS	6	3/8"	9.53	7.8	17.0	173	273	197
RSSE06	6	7/16"	11.1	9.5	20.0	190	295	298
RSSE07DS	7	7/16"	11.1	9.5	20.0	194	299	302
RSSE07	7	1/2"	12.7	11.5	23.0	225	355	466
RSSE08DS	8	1/2"	12.7	11.5	23.0	225	350	500
RSSE08	8	5/8"	14.28	13.5	24.0	285	410	968
RSSE08US	8	5/8"	16.0	15.0	29.0	290	445	1032
RSSE10	10	5/8"	16.0	15.0	29.0	290	445	1032
RSSE12	12	3/4"	19.05	17.5	34.0	335	505	1626
RSSE14	14	7/8"	22.2	21.5	40.0	375	570	2657
RSSE16	16	1"	25.4	23.5	46.0	440	680	3694
RSSE19	19	1 1/8"	28.58	27.5	51.0	495	765	3670
RSSE22	22	1 1/4"	32.0	31.	58.0	535	820	5442
RSSE26	26	1 3/8"	35.0	33.5	63.0	615	940	11404

## Rigging Screw Closed Body with Fork and Toggle



Product Code	Wire	Thread	P	ST	SC	FC	FT	Min L	Max L	Nominal Weight
	mm	unf								g
RSFT03	3	1/4"	6.0	8.0	14.0	12.5	6.2	148.5	218.5	103
RSFT04	4	5/16"	8.0	9.0	19.0	17.0	7.9	182.0	260.0	191
RSFT05	5	3/8"	9.5	11.0	21.0	19.0	9.9	221.5	321.5	294
RSFT06	6	7/16"	11.0	13.0	26.0	22.0	10.9	249.5	357.5	450
RSFT07	7	1/2"	12.7	15.0	28.0	25.0	12.7	296.0	428.0	686
RSFT10	10	5/8"	16.0	19.0	37.0	32.0	15.8	384.5	540.5	1384
RSFT12	12	3/4"	19.0	22.0	45.0	38.0	17.8	450.5	621.5	2302
RSFT14	14	7/8"	22.0	25.0	54.0	45.0	22.0	506.0	703.0	3666
RSFT16	16	1"	25	28.0	64.0	50.0	25.0	587.5	826.5	5124
RSFT19	19	1 1/8"	28.0	32.0	68.0	58.0	28.2	666.0	936.0	7743
RSFT22	22	1 1/4"	32.0	35.0	84.0	64.0	61.8	723.5	1007.5	11290
RSFT26	26	1 3/8"	35.0	38.0	98.0	70.0	34.8	825.5	1149.5	15693

# High Corrosion Resistance Tested Rigging Screw Jaw/Eye

## Product features:

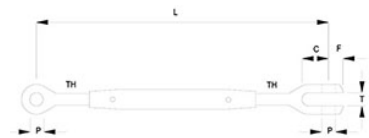
- Manufactured from stainless steel EN10088 1.4404 (Marine Grade 316L)
- Excellent for lifting applications where a high level of corrosion resistance is required
- Factor of Safety 6:1
- All CE marked and supplied with instruction leaflet on safe use and storage

## Quality features:

- Every turnbuckle is proof load tested to 2 x WLL and certified at our manufacturing facility in the North East of England
- All turnbuckles are manufactured in accordance with the Machine Directive 2006/42/EC
- Inspection certificate BS EN 10204 3.1 available on request
- High quality finish and excellent polish

## Typical Applications:

- Water utility installations & other corrosive facilities
- Chemical installations – Chlorine plants etc
- General lifting in off-shore applications
- General lifting and tethering in leisure marine applications
- General lifting purposes



Item Codes	Thread	Dimensions & Wll								
		Wll	Wire Dia	Pin P	H	C	T	Min L	Max L	Weight
		kg			mm					g
RSFE03-WLL	1/4"unf	200	3	6	6,35	12,5	6,2	127	197	67
RSFE04-WLL	5/16"unf	325	4	8	8	17	7,9	154	232	135
RSFE05-WLL	3/8"unf	500	5	9,5	9,53	19	9,9	189	289	235
RSFE06-WLL	7/16"unf	700	6	11	11,1	20	10,9	207	316	332
RSFE07-WLL	1/2"unf	825	7	12	12,7	25	12,7	244	376	521
RSFE08-WLL	5/8"unf	1325	8	14	14,3	28	13,5	300	456	1093
RSFE10-WLL	5/8"unf	1325	10	16	16	32	15,8	325	380	1198
RSFE12-WLL	3/4"unf	1825	12	19	19,05	38	17,8	373	544	1952
RSFE14-WLL	7/8"unf	2500	14	22	22,2	45	22	415	610	3048
RSFE16-WLL	1"unf	3300	16	25	25,4	50	25	485	724	4407
RSFE19-WLL	1 1/8"unf	4300	19	28	28,58	58	28,2	548	818	4364
RSFE22-WLL	1 1/4"unf	5500	22	32	32	64	31,8	595	879	5992
RSFE26-WLL	1 3/8"unf	7600	26	35	35	70	34,8	672	996	12122

# High Corrosion Resistance Tested Rigging Screw Eye/Eye

## Product features:

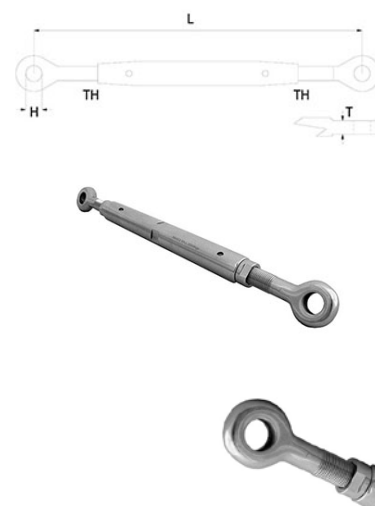
- Manufactured from stainless steel EN10088 1.4404 (Marine Grade 316L)
- Excellent for lifting applications where a high level of corrosion resistance is required
- Factor of Safety 6:1
- All CE marked and supplied with instruction leaflet on safe use and storage

## Quality features:

- Every turnbuckle is proof load tested to 2 x WLL and certified at our manufacturing facility in the North East of England
- All turnbuckles are manufactured in accordance with the Machine Directive 2006/42/EC
- Inspection certificate BS EN 10204 3.1 available on request
- High quality finish and excellent polish

## Typical Applications:

- Water utility installations & other corrosive facilities
- Chemical installations – Chlorine plants etc
- General lifting in off-shore applications
- General lifting and tethering in leisure marine applications
- General lifting purposes



Item Codes	Thread	WLL	Wire Dia	Dimensions & WLL		Min L	Max L	Weight
				H	T			
		kg		mm				g
RSEE03-WLL	1/4"unf	200	3	6,35	5	120	190	54
RSEE04-WLL	5/16"unf	325	4	8	6,5	143	221	100
RSEE05-WLL	3/8"unf	500	5	9,53	7,8	177	277	188
RSEE06-WLL	7/16"unf	700	6	11,1	9,5	193	301	266
RSEE07-WLL	1/2"unf	825	7	12,7	11,5	221	363	428
RSEE08-WLL	5/8"unf	1325	8	14,3	13,5	279	435	926
RSEE10-WLL	5/8"unf	1325	10	16	15	303	459	962
RSEE12-WLL	3/4"unf	1825	12	19,05	17,5	346	517	1486
RSEE14-WLL	7/8"unf	2500	14	22,2	21,5	383	580	2519
RSEE16-WLL	1"unf	3300	16	25,4	23,5	452	691	3474
RSEE19-WLL	1 1/8"unf	4300	19	28,58	27,5	510	780	3710
RSEE22-WLL	1 1/4"unf	5500	22	32	31	557	841	4273
RSEE26-WLL	1 3/8"unf	7600	26	35	33,5	628	952	10159

# High Corrosion Resistance Tested Rigging Screw Jaw/Jaw

## Product features:

- Manufactured from stainless steel EN10088 1.4404 (Marine Grade 316L)
- Excellent for lifting applications where a high level of corrosion resistance is required
- Factor of Safety 6:1
- All CE marked and supplied with instruction leaflet on safe use and storage

## Quality features:

- Every turnbuckle is proof load tested to 2 x WLL and certified at our manufacturing facility in the North East of England
- All turnbuckles are manufactured in accordance with the Machine Directive 2006/42/EC
- Inspection certificate BS EN 10204 3.1 available on request
- High quality finish and excellent polish

## Typical Applications:

- Water utility installations & other corrosive facilities
- Chemical installations – Chlorine plants etc
- General lifting in off-shore applications
- General lifting and tethering in leisure marine applications
- General lifting purposes

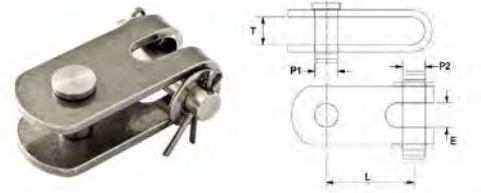


Item Codes	Thread	Dimensions & WLL							
		WLL	Wire Dia	Pin P	C	T	Min L	Max L	Weight
		kg	mm		mm				g
RSFF03-WLL	1/4"unf	200	3	6	12,5	6,2	135	205	80
RSFF04-WLL	5/16"unf	325	4	8	17	7,9	165	240	170
RSFF05-WLL	3/8"unf	500	5	9,5	19	9,9	200	300	282
RSFF06-WLL	7/16"unf	700	6	11	20	10,9	220	330	398
RSFF07-WLL	1/2"unf	825	7	12	25	12,7	260	390	614
RSFF08-WLL	5/8"unf	1325	8	14	28	13,5	325	480	1260
RSFF10-WLL	5/8"unf	1325	10	16	32	15,8	345	500	1434
RSFF12-WLL	3/4"unf	1825	12	19	38	17,8	400	570	2418
RSFF14-WLL	7/8"unf	2500	14	22	45	22	450	640	3577
RSFF16-WLL	1"unf	3300	16	25	50	25	520	760	5340
RSFF19-WLL	1 1/8"unf	4300	19	28	58	28,2	585	855	8200
RSFF22-WLL	1 1/4"unf	5500	22	32	64	31,5	635	920	10711
RSFF26-WLL	1 3/8"unf	7600	26	35	70	34,8	715	1040	14085

## Toggles

### Stainless Steel Double Jaw Toggles

**General:** Our strap toggles are bent from high quality 316L stainless plates with the same degree of care as our stainless steel lifting shackles, resulting in a reliable and consistent product. Bar toggles are machined from high quality European made 316L bar. All toggles are finished with a mirror polish finish.



Product Code	P1/P2	T	E	L
mm				
DJT06	6.0	8.0	5.5	23
DJT08	8.0	9.0	8.0	26
DJT10	9.5	11.0	9.5	30
DJT11	11.0	13.0	13.0	40
DJT12	12.7	15.0	13.0	43
DJT16	16.0	19.0	16.0	57
DJT19	19.0	22.0	18.5	77
DJT22	22.0	25.0	24.5	88
DJT26	25.0	28.0	24.5	100
DJT28	28.0	32.0	30.0	116
DJT32	32.0	35.0	35.0	125
DJT35	35.0	38.0	36.5	152

### Stainless Steel Eye Jaw Toggles



Product Code	P	T	Y	L	OL	W	Weight
mm							g
EJT1/2	12.7	13	26	51	81	12.5	81
EJT5/8	16	17	32	64	101	16	223
EJT3/4	19	20	39	74	117	19	413
EJT7/8	22	24	47	84	137	22	708
EJT1	25	27	51	100	158	25	891
EJT11/8	28	29	59	108	173	28	1481
EJT11/4	32	34	66	123	197	32	1937
EJT13/8	35	37	70	150	234	35	3164



## Stainless Steel Bar Toggles



Product Code	P	C	T	H	OD	L	Weight
mm							g
TOG03	6.0	12.5	6.2	6.35	14.3	42	22
TOG04	8.0	17	7.9	8.00	18.0	53	44
TOG05	9.5	19	9.9	9.53	22.2	64	84
TOG06	11.0	22	10.9	11.11	25.4	72	100
TOG07	12.0	25	12.7	12.70	28.6	87	180g
TOG08	14.0	28	13.8	14.28	34.9	95	292
TOG10	16.0	32	15.8	16.00	38.1	106	424
TOG12	19.0	38	17.8	19.05	47.6	125	724
TOG14	22.0	45	22.0	22.22	54.0	146	825
TOG16	25	50	25.0	25.40	63.5	162	1790
TOG19	28.0	58	28.2	28.58	69.9	184	2415
TOG22	32.0	64	31.8	32.00	76.2	207	3229
TOG26	35.0	70	34.8	35.00	82.5	227	5624

## Guard Rail Fittings & Pins

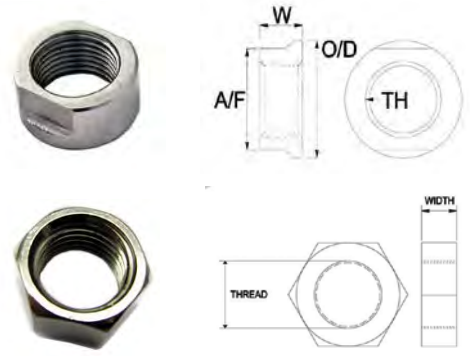
### Stainless Steel Clevis Pin including Split Pins and Split Rings



Product Code	D	P	H	L	Weight	Pin/Ring
mm					g	
CP06	5.9	2.0	8.0	15.0	4	SP-07/SR1
CP08	7.9	2.2	9.5	18.4	10	SP-07/SR2
CP10	9.5	2.6	11.1	22.5	16	SP-01
CP11	11.0	2.8	12.7	25.7	22	SP-01
CP12	11.9	3.0	14.3	28.9	32	SP-02
CP14	13.9	3.5	16.0	35.2	50	SP-02
CP16	15.9	3.5	19.0	38.4	72	SP-02
CP19	18.8	4.2	22.2	44.8	126	SP-03
CP22	22.0	4.2	25.4	51.1	190	SP-03
CP25	25.3	5.1	28.6	63.8	298	SP-04
CP28	28.0	5.1	31.7	70.2	394	SP-04
CP32	31.8	6.5	34.9	76.5	550	SP-05
CP35	34.8	6.5	38.1	82.8	718	SP-05

Product Code	Size	Product Code	Size	Product Code	Size	Product Code	Size
SP-01	3/32 x 3/4	SP-08	1/4 x 3	SR-1	10 x 1mm	SR-6	25 x 1.2mm
SP-02	1/8 x 1	SP-09	3/32 x 1/2	SR-2	14 x 1mm	SR-7	24 x 2mm
SP-03	3/32 x 1 1/4	SP-10	3/32 x 1	SR-3	3/4 x 1mm	SR-8	11 x 1mm
SP-04	3/16 x 1 1/2	SP-11	1/8 x 1 3/4	SR-4	7/8 x 1.2mm	SR-9	5/8 x 1mm
SP-05	1/4 x 2	SP-12	4x 63mm	SR-5	22 x 1mm		
SP-06	1/8 x 1 1/2	SP-13	3/8x 3 1/2				
SP-07	1/16 x 1/2						

# Stainless Steel Nut Round Locking Nuts and Hexagonal Locking Nuts



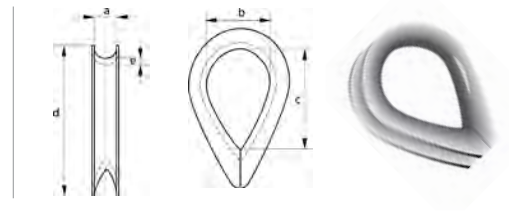
Hexagon Pattern			
Product Code	Thread Size	Thread Direction	Width
	unf		mm
NUT1/4	1/4"	RH or LH	3.8
NUT5/16	5/16"	RH or LH	5.4
NUT3/8	3/8"	RH or LH	6.3
NUT7/16	7/16"	RH or LH	7.8
NUT1/2	1/2"	RH or LH	7.8
NUT5/8	5/8"	RH or LH	10.7
NUT3/4	3/4"	RH or LH	13.1
NUT7/8	7/8"	RH or LH	15.4
NUT1	1"	RH or LH	17.3
NUT11/8	1 1/8"	RH or LH	17.8
NUT11/4	1 1/4"	RH or LH	21.6
NUT13/8	1 3/8"	RH or LH	23.0

Round Pattern – Designed For Use With Closed Body Turnbuckles					
Product Code	Thread Size	Thread Direction	Width	OD	A/F
	unf			mm	
RLN5/8	5/8"	RH or LH	11	22	19
RLN3/4	3/4"	RH or LH	13	27	24
RLN1	1"	RH or LH	14	38	33
RLN11/8	1 1/8"	RH or LH	16	44	37
RLN11/4	1 1/4"	RH or LH	18	50	40
RLN13/8	1 3/8"	RH or LH	20	54	46

## Stainless Steel Thimbles commercial pattern

**Material:** Stainless steel AISI 316

**Finish:** Polished



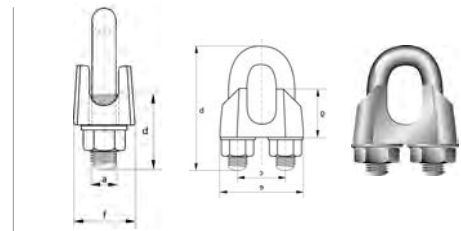
Width groove	Width inside	Length inside	Length	Thickness	Product code	Weight
A	B	C	D	E		per 100 pieces
mm						
2	9	15	23	1,0	92601	0,20
3	10	16	25	1,0	92602	0,40
4	11	17	28	1,0	92603	0,80
5	13	20	32	1,0	92604	0,80
6	16	25	39	1,2	92605	1,40
8	20	32	49	1,4	92606	2,80
10	26	40	55	1,9	92607	4,80
12	28	45	70	2,0	92608	8,00
16	37	62	85	2,5	92609	15,10
20	45	78	115	3,0	92610	21,70
22	50	88	125	3,0	92611	32,00
24	58	96	135	4,0	92612	66,00

## Stainless Steel Wire Rope Grips commercial pattern

**Material:** Bridge – stainless steel AISI 316. Nuts – stainless steel AISI 316.

U-bolt – stainless steel AISI 316.

**Finish:** Polished.



Diameter wire rope	Diameter bow	Length bow	Width inside	Length thread	Length base	Thickness base	Height base	Product code	Weight
A	B	C	D	E	F	G			per 100 pieces
mm									kg
2	3	17	8	10	17	10	10	92801	0,90
3	4	20	9	12	21	10	10	92802	1,00
4	4	22	9	13	21	10	10	92803	1,30
5	5	24	11	13	23	11	10	92804	1,50
6	5	28	13	15	26	12	11	92805	2,10
8	6	34	16	19	30	14	15	92806	4,10
10	8	42	19	22	34	18	17	92807	6,80
13	10	55	24	30	42	23	21	92808	13,00
16	12	63	29	33	50	26	26	92809	21,00
19	12	75	32	38	54	29	30	92810	28,00
22	14	85	37	44	61	33	34	92811	40,00
26	14	95	41	45	65	35	37	92812	42,00

# Shackles

## Shackle Pin Types

**General:** Suffix Code with pin type.

No Suffix – Standard Pin RS – Shake Proof Pin C – Socket Head Pin



Standard Screw Pin  
4mm to 19mm



Shake Proof Retain Pin  
5mm to 16mm



Socket Head Pin  
5mm to 19mm

## Marine Shackles Socket Head Pin

Pin Size	Key Size
mm	
5	2
6	3
8	4
10	4
11	5
12	5
16	6
19	6

## Marine Shackles High Resistance Shackles

**General:** Forged stainless steel shackles are inherently stronger than cast ones (as most low cost shackles are) as they make use of grain structure from the drawing process used to produce the blanks. Electrical upset forging takes it one stage further by ensuring the grain flows around the shackle head to give maximum strength.

Furthermore, electrical upsetting does not result in further cold-work which results in benefits for fatigue and corrosion resistance. Upset forging is also extremely flexible.



Product Code	Pin P	Body B	Jaw J	inside L	M.B.L.*	Weight
mm					kg	kg
HRD06	6	6	12	20	2,700	24
HRD08	8	8	16	26	4,400	53
HRD10	10	9.5	20	33	7,500	97
HRD12	12	12.7	24	39	10,000	237
HRD14	14	14.3	28	49	14,000	365
HRD16	16	16	32	56	19,000	470
HRD20	20	20	40	70	28,000	605

## Marine Shackles Stainless Steel 316 Bow



Product Code	Pin P	Body B	Jaw J	Bow B	Inside L	M.B.L.*	Nominal Weight
			mm			kg	g
B04	4	4	8	12	18	600	9
B05	5	5	10	16	22	1200	14
B06	6	6	13	19	28	1600	28
B08	8	8	16	25	35	2400	59
B10	9.5	9.5	19	28	38	3800	106
B11	11	11	22	33	46	4800	161
B12	12.7	12.7	26	38	52	6000	270
B16	16	14.3	29	43	60	8000	500
B19	19	16	32	50	68	10000	630

Larger manufactured shackles made to order. Refer to shackle proof and socket head shackle specification sheet for details of pins. Specialist shackles to OEM design also available. Contact our sales department for a very competitive quote. \*typical minimum breaking load

## Marine Shackles Stainless Steel 316 D and Wide D



Stainless Steel 316 D shackles							
Product Code	Pin P	Body B	Jaw J	Inside L	M.B.L.*	Nominal Weight	
			mm		kg	g	
D04	4	4	8	16	800	7	
D05	5	5	10	20	1500	13	
D06	6	6	13	25	1950	24	
D08	8	8	16	32	3000	53	
D10	9.5	9.5	19	38	4800	97	
D11	11	11	22	44	6000	152	
D12	12.7	12.7	26	52	7500	237	
D16	16	14.3	29	58	10000	450	
D19	19	16	32	64	14000	585	

Stainless Steel Grade 316 Wide D Shackles							
Product Code	Pin P	Body B	Jaw J	Inside L	M.B.L.*	Nominal Weight	
			mm		kg	g	
WD05	5	5	20	30	750	15	
WD06	6	6	25	32	1300	31	
WD08	8	8	32	48	2000	65	
WD10	10	10	40	60	3300	116	

# Marine Shackles Stainless Steel 316 Long D and Twist

**General:** Inspection certificate BS EN10204 3.1b available on request. This must be specified at the time of order.



Stainless Steel 316 D shackles						
Product Code	Pin P	Body B	Jaw J	Inside L	M.B.L.*	Weight
		mm			kg	g
LD04	4	4	8	24	600	12
LD05	5	5	10	29	1200	20
LD06	6	6	13	43	1600	32
LD08	8	8	16	49	2400	69
LD10	9.5	9.5	19	55	3800	117

Stainless Steel Grade 316 Long Twist Shackles						
Product Code	Pin P	Body B	Jaw J	Inside L	M.B.L.*	Nominal Weight
		mm			kg	g
LT04	4	4	8	24	600	12
LT05	5	5	10	28	1200	20
LT06	6	6	13	38	1600	32
LT08	8	8	16	45	2400	69
LT10	9.5	9.5	19	50	3800	117

Inspection certificate BS EN10204 3.1b available on request. This must be specified at the time of order.

# Marine Shackles Stainless Steel 316 Twist



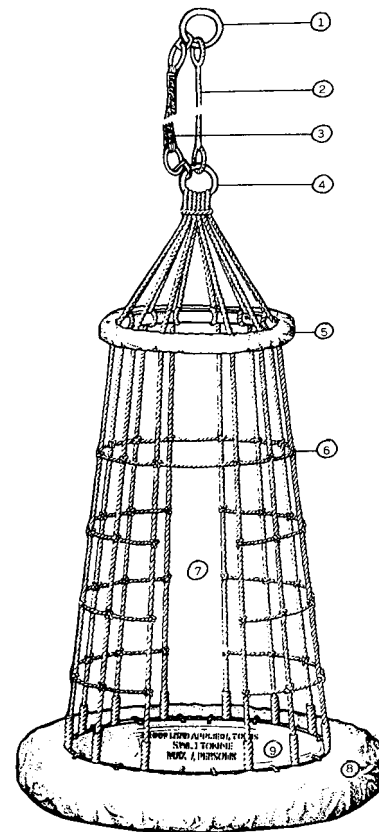
Stainless Steel 316 D shackles						
Product Code	Pin P	Body B	Jaw J	Inside L	M.B.L.*	Nominal Weight
		mm			kg	g
T04	4	4	8	15.5	600	7
T05	5	5	10	17.5	1200	13
T06	6	6	13	21	1600	24
T08	8	8	16	26	2400	53
T10	9.5	9.5	19	32	3800	97
T11	11	11	22	39	4800	152
T12	12.7	12.7	26	44	6000	237
T16	16	14.3	29	50	8000	450
T19	19	16	32	57	11000	585

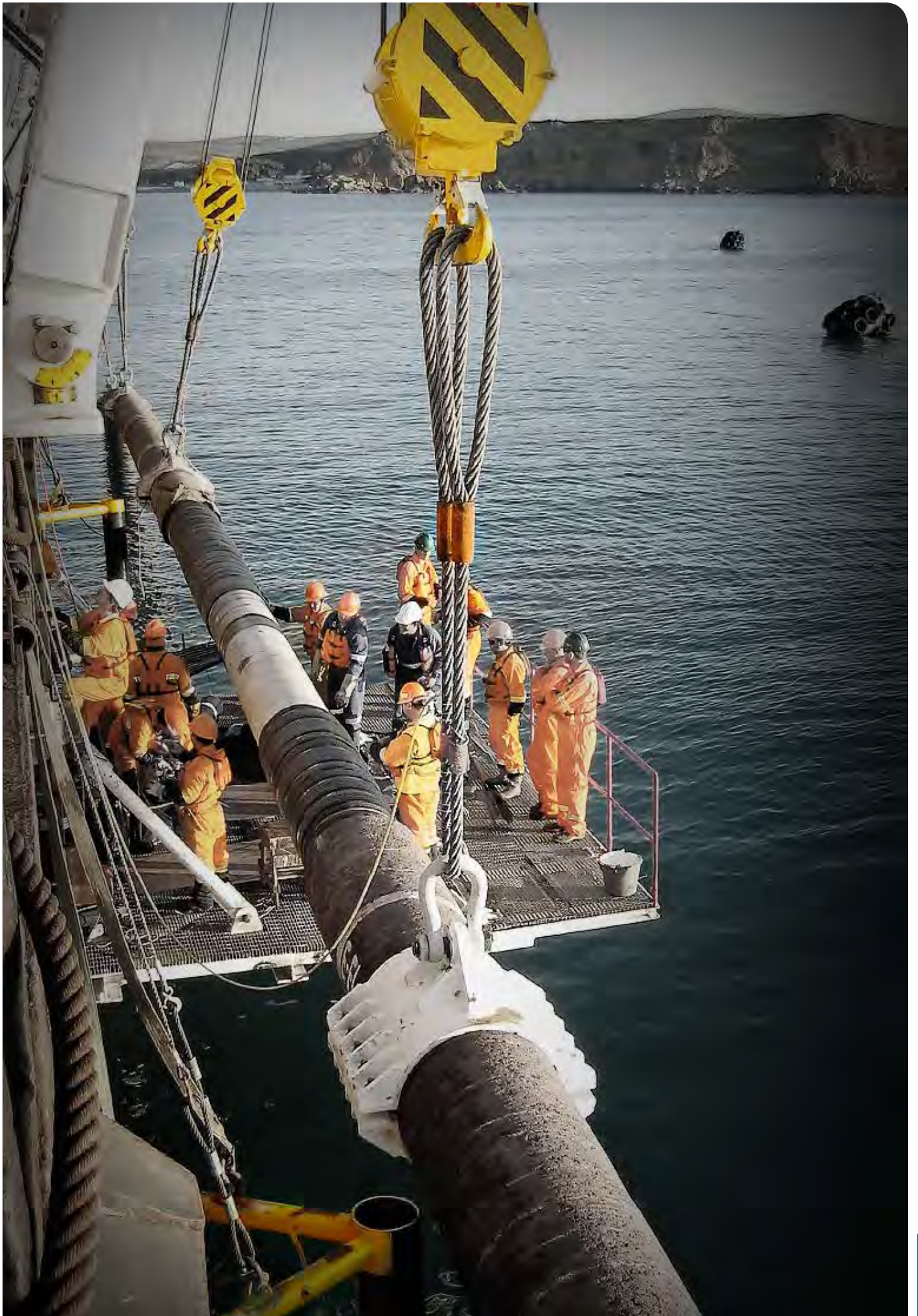
# Personnel Lifting Basket

## Oil Rig Personnel Lifting Basket

1. Main lifting ring
2. Main hoist wire. 2" Rope galv. heavy duty, SWL 2
3. Anti-twist stabilizer unit with high visibility cover
4. Basket head ring
5. Padded galv. spreader ring. 3" dia. Fitted with nylon cover
6. Main net in 18 mm all weather synthetic rope
7. First aid stretcher opening
8. Double galv. steel tube ring with canvas covered infilling bouyancy fender stainless steel strapping and clips
9. Synthetic rope net floor with PVC saveal cover

Storage container, manufactured from high viscosity G.R.P. safety material available.







“

Based on approximately 100 years experience and KnowHow within lifting and testing, CERTEX (UK) is your safe and reliable partner in steel wire rope, lifting applications and related services.

**CERTEX**

Certex (UK)  
www.certex.co.uk · info@certex.co.uk  
Tel. 0333 600 3005



Price: £19.95