

**Secure retention
of your goods is
as important as
the handling**



5. Lashings & Load Security

Lashing & Load Security.....	224
Lashings.....	226
SECU-FIX Suspended Strap System	229
Corner Protectors.....	231
Double Decking System.....	232
Cargo Bars	234
Recovery	236
Car Transporter	237
Webbing Lashings.....	239

See more at www.certex.co.uk/products

Lashing & Load Security

All lashing systems are available as either single or 2 part assemblies, also in lengths as required by the customer. With a choice of end fitting and options for coloured webbings. All Forankra Pritchard lashing systems are manufactured in accordance with current standards EN12195 and relate to their LC values.

Loading Information

General: Structure of ratchet tie downs and lashing capacity (LC).
The regulations regarding the lashing of cargo in road transport are set by the Department of Transport. These can be found in the Code of Practice, SAFETY of LOADS on Vehicles booklet.



2 parts, with ratchet and claw

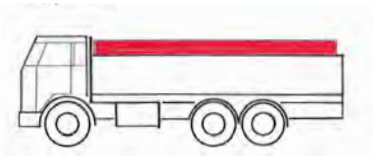


1 part, without hooks



Hook Lashing Ratchet Lashing

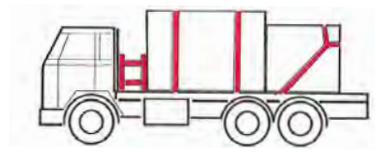
Load Placing



Distribute the load equally
Length- and widthwise.



Pay attention to
weight distribution.



Support the load against
the front wall.



Support after partial
unloading.



Pay attention to
weight distribution.

Attrition / Lashing Capacity

The amount of friction force depends on the roughness of contact surfaces and the weight of the load. It is weakened significantly by ice, impurities and dampness. The size of contact surface areas does not affect friction force.

Example:

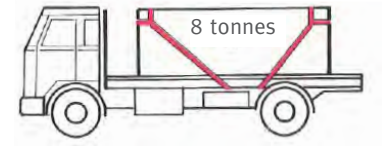
Vehicle load weight = 8t

Friction coefficient between load and pallet = 0.2

Friction force (0.2×8t) ff 1.6t (16kN)

In addition to friction, the following securing requirements should be met:

- forward 8t – 1.6t = 6.4t (64kN)
- sideways 4t – 1.6t = 2.4t (24kN)
- backward 4t – 1.6t = 2.4t (24kN)



Pallet	Friction Coefficient
Dry	0.3
Damp	0.2
Snowy	0.1

Direction of Motion	Lashing Capacity			Requirement
	Sling	Friction coefficient = 0.2 0.2 x 16t ≈ 3t	Total	
	t		t	t (kN)
Forward ≤ 60° 4 x 3.5t	14	3	17	16 tn (160 kN)
Sideways=90° 0.25 x 6 x 3.5t	5.3	3	8.3	8 tn (80 kN)
Backward ≤ 60° 2 x 3.5t	7	3	10	8 tn (80 kN)

Loading Securing

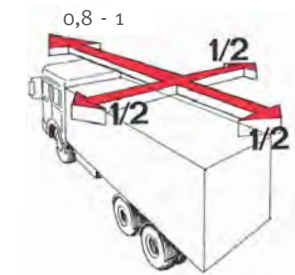
European Best Practices Guidelines On Cargo Securing For Road Transport

Applies to:

- Trucks
- Truck trailers, when the total weight is over 3.5t

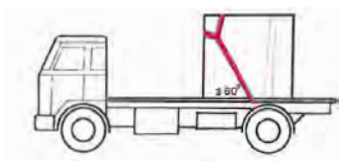
The load must be secured in a way that it will endure:

- The forward weight of the entire load
- Half of the load weight sideways and backwards



Lashing Angle

When the lashing device is in a horizontal position, the biggest holding force can be achieved. In practice, the lashing force can be calculated according to the below table.



Angle of the lashing device	Lashing force % of the nominal strength
0–60°	100
70°	70
80°	35
90°	25

Lashings

50mm 5ton ratchet lashing – CLAW HOOK

- Double locking 50mm long wide handle ratchet and 50mm claw hook end fittings
- High tenacity blue polyester webbing
- Product wrapped and bar coded
- EN12195-2:2001 Compliant



Type	Package	LC	Breaking strength	Length	Band width	Package size
		daN	kg	m	mm	pc / box
2 part	Loose	2000	5000	4 - 20	50	10

50mm 5Ton Ergo – Ratchet Lashing Claw Hook

- Double locking ERGO 50mm long wide handle ratchet and 50mm Claw hook end fittings
- High tenacity orange polyester webbing
- Length – 6, 8, 10, and 12 metres from stock
- Product wrapped and bar coded
- Boxed in quantity of 10
- Heavy duty Break Force 5,000kg
- Lashing Capacity 2,500daN



35mm 3ton ratchet lashing –CLAW HOOK

- Double locking 35mm long wide handle ratchet and 35mm claw hook end fittings
- High tenacity orange polyester webbing
- Length – 4, 6 and 8 metres from stock
- Product wrapped and bar coded
- Boxed in quantity of 10
- Heavy duty Break Force 3,000kg
- Lashing Capacity 1,500daN



Type	Package	LC	Breaking strength	Length	Band width	Package
		daN	kg	m	mm	pc / box
2 part	Loose	1500	2500	4 - 20	35	25

25mm 800kg ratchet lashing – CLAW HOOK

- Lightweight 25mm paddle handle ratchet and 25mm claw hook end fittings
- High tenacity high polyester webbing
- Length – 4, 6 and 8 meters from stock
- Product wrapped and bar coded
- Boxed in quantity of 25
- Heavy duty Break Force 800kg
- Lashing Capacity 400daN with a latch fitting well to lashing e.g. motorcycles
- Webbing material 100 % polyester



Type	Package	LC	Breaking strength	Length	Band width	Package size
		daN	kg	m	mm	pc / box
2 part, yellow	Bag	400	800	0.4 + 4.6	25	50
2 part, blue	Loose	400	800	0.3 + 4.7	25	50

75mm 10000kg RANGE

- For lashing extremely heavy items on boats and carriages etc.
- Standard end fittings steel double J-hooks
- Webbing material 100 % polyester



Type	Package	LC	Breaking strength	Length	Band width	Package size
		daN	kg	m	mm	pc / box
2 part	Loose	5000	10000	6,8,10,12	75	1

ENDLESS LASHING OPTIONS, 75mm, 35mm and 25mm



LC	Breaking strength	Webbing width
daN	kg	mm
5000	10000	75
4000	8000	50
3000	6000	35
1400	2800	25

Alternative End Fitting Options



Single Claw Hook
50mm, 5000kg



Claw Hook
50mm, 5000kg



Keeper Claw Hook
50mm, 5000kg



Claw Hook
50mm, 1500kg



Stainless Steel
Claw Hook
50mm, 4000kg



Bolt on Claw Hook
50mm, 3000kg



Bolt on Claw Hook
35mm, 3000kg



Closed D Rave Hook
50mm, 750kg



Open Rave Hook
50mm, 5000kg

Latch Hook
50mm, 2500kg



Latch Hook
50mm, 1000kg



Track Hook
50mm, 800kg



Flat pressed D ring
50mm, 5000kg



Loop end



Flat Hook
50mm, 1250kg

SECU-FIX Suspended Strap System

General:The ACK suspended straps system offers a fast, safe and simple solution for securing and dismantling all types of loads in trucks (semi-trailers and trailers with sliding curtain) in combination with tie down straps EN 12195 -2 with a width of 50 mm.

The benefits of the system

- Safer when stowing high loads, the system of suspended straps makes it possible to secure the load in a fast and solid way with a single movement
- Fast and effective thanks to the system of suspended straps, the loading and unloading can be done quickly. The sliding cover only needs to be opened on one side. When loading, the straps are immediately available and the installation is undertaken quickly. During unloading, the straps are returned to position by elastic bands. The straps do not interfere, as the maximum load width is always available. After unloading, the straps do not require to be rolled up or rolled. This saves you 30 minutes per change
- No loss, or rapid wear of straps because the straps are completely integrated into the suspended system, there is no loss or wear of the straps
- Easy to use this system of suspended straps is within everyone's reach It is a simple docking system, which your truck drivers will know and appreciate quickly
- Applications the system of suspended straps can be applied during loading and unloading from the rear of the vehicle, but also from the side, regardless of the shape and height of the load



MULTI-STICK

General: The MULTI-STICK is a multifunctional pole that improves lashing operations, thanks to its 3 interchangeable heads. Its innovation lies in its ability to offer three functions in one unit. Whilst ensuring the safety of the driver operating from ground level.

Composition

- 1. SECU-STICK function - the driver places and dismounts the drop sides in height up to 3.5m, without effort, whilst remaining at ground level. The driver can also set up corner and angle protection products. (max 1.2m width)
- 1. STRAP-GO function - whilst ensuring the driver remains safe, the strap is launched to cover the load from the ground. It limits the risk to the driver from injury and have to work at height.
- 1. CORNER-STICK function - allows the driver to easily place angle and corner protection product from 1.2m to 2.4m in width. With an anti-slip coating on the clamps and allowing safe placement from ground level.
- 1. The telescopic aluminium handled MULTI-STICK has a robust foam covered lower section for greater comfort and 3 adjustable clamp locks. This allows adjustment of the full length up to 2.5m. Each of the three separate heads are easily interchangeable.

The benefits of the system

- SAFETY - the driver remains on the ground to carry out all operations and lashing.
- ERGONOMIC - light, easy to handle, limits risk to the driver from working at height issues.
- 3 in 1 PRODUCT - interchangeable head units to use with a single handle pole safely.
- ECONOMICAL - saves loading and lashing time for the driver and loaders in all operations.



Product	Code	Dimensions mm	Weight kg	Material	50%	40%	30%	RRP
MULTI-STICK	29B0010	Adjustable 1000 - 2500	0.65	Aluminium	21.55	25.86	30.17	43.11
SECU-STICK	29B0020	182 x 97	0.54	Aluminium Steel	37.35	44.82	52.29	74.71
STRAP-GO	29B0030	220 x 86	0.44	Aluminium Steel	42.75	51.31	59.85	85.51
Corner-stick	29B0040	900 x 120	0.9	Steel	23.65	28.38	33.11	47.31

Corner Protectors

Long Heavy Duty – Corner Protector

Long Heavy Duty 180 x 140 x 5mm with options on length up to 6m length. Available in either Black or Orange as standard. STOCK sizes in black 0.8m (27B1325) and 2.4m (27B1305)



Protector Heavy Duty – Corner Protector

Protector Heavy Duty suitable for 50mm webbing and manufactured from robust PP/PE material. Available in black as standard. Other colours are subject to special order volume. (27B1345)



Small Open suitable – Corner Protector

Small Open suitable for 50mm webbing and manufactured from PE material. Available in black or white as standard. Other colours are subject to special order volume. (27B1220 black)



Adjustable Combination connectable – Corner Protector

Adjustable Combination connectable corner protector available in 600mm sections. Manufactured from robust PP/PE material. Available in black as standard.



Double Decking System

TD-system is based partially on a unique flight cargo securing system. The system has been developed and based on end user experience over several decades. The vertical beams for the decking system are available as surface-mounted and imbedded models. Attachment independent on the specific type of model, with screws, rivets or by clueing. TD- vertical beams fit to be used also in diagonal position for loading and load separation TD- vertical beams fit perfectly for vertical controlling of the load.

- Always available, if necessary, TD-double deck floor beam can be stored near the ceiling, where it locks on the tracks, and is easily accessible
- Easy to use the double deck floor beam is out of reach, the beam locking mechanism can be accessed using an extendable bar
- The optimal loading space
The track has a thickness of only 12 mm, which is why the vehicle load space is very effectively available
- Large height adjustability. A major advantage is a dense height adjustment, the double deck floor beam anchor intervals are only 25 mm.
- Rational design. Mid track slots are effectively protected from damage, due to a carefully thought out shape
- Insulation benefits for refrigerated transports. Due to the ultra thin design of tracks, they do not need to be embedded to the wall, so the wall insulation capacity does not change
- Retrofitting. TD-double deck floor system can also be retrofitted.
- Easy to clean due to its design, its easy to keep clean
- Gentle for the goods. The finished design of the tracks minimizes the risk of damage to the goods during the unloading and loading the cargo

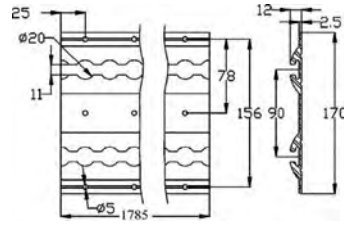


A trailer with the TD-double deck floor system

Length	13.6 m
Height	2.5 m
Pallet slots	66 pcs
Double deck floor beam	22 pcs
Double row vertical beam	20 pcs
Single row vertical beam	4 pcs
Release rod	1 pcs

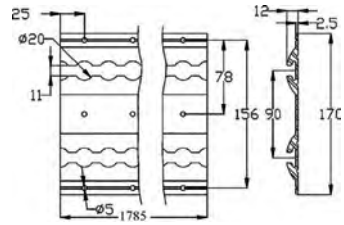
Flanged Single Track

Available in 1960 mm.
Material: Aluminum.
Dimension: 1785 mm.
Weight: 2.55 kg.



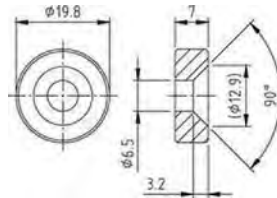
Flanged Double Track

Available in 1960 mm.
Material: Aluminum.
Dimension: 1785 mm.
Weight: 3.73 kg.



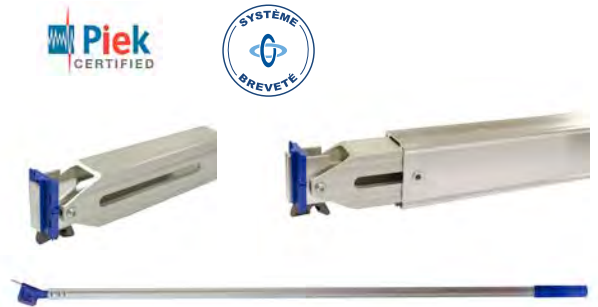
Beam Stop For Tracks

General: For limiting leeway of the beams in the tracks.
Material: Aluminum.
Diameter: 19.80 mm.
Weight: 0.01 kg.



TD – Double Decking Beam

General: Vertical Beam. Winner of the innovation price of the year. Extremely silent, fast and easy to use. Component of Forankra's XtraDeck-system. For a surface-mounted vertical beam.



Material	Product code	Lenght mm	Workload daN	Weight kg
Aluminium	TDPALKKIX	2385-2750	1000	6.70

Support Beam 1000 Kg

General: Beam section 90x65 mm – Capacity 1000 daN uniformly distributed load – Anti-slip surface.

Beam tip: 46229 21DPA.
Material: Aluminum.
Dimension: 2420 to 2730 mm.
Capacity: 1000 daN.
Weight: 6.70 kg.

Release rod: 48836 10.
Material: Aluminum and inox.
Weight: 0.55 kg.



Cargo Bars

ErgoBar

Cargo bars, or shoring beams, are used to support and separate goods on the cargo carrier. They are easy to position and its height can be adjusted to the height of the trailer.



Type	mm	N	
ErgoBar – Short	1900 – 2300	800	New cargo bar with 2-spring function with 800N pressure, for the lower trailers. The unique shape of the profile gives the cargo bar strength and a recessed handle. The cargo bar stands alone between floor and ceiling with the weaker spring. With a simple motion you set the stronger spring in action into shoring position.
ErgoBar – Standard	2300 – 2800	1500	New cargo bar with 2-spring function with 1500N pressure, for the higher trailers. The unique shape of the profile gives the cargo bar strength and a recessed handle. The cargo bar stands alone between floor and ceiling with the weaker spring. With a simple motion you set the stronger spring in action into shoring position.
ErgoBar – Long	2650 – 3450	1500	New cargo bar with 2-spring function with 1500N pressure, for the higher trailers. The unique shape of the profile gives the cargo bar strength and a recessed handle. The cargo bar stands alone between floor and ceiling with the weaker spring. With a simple motion you set the stronger spring in action into shoring position.

Cargo bar Gas – Long

General: Classic cargo bar used in most higher trailers on the market. Robust construction which follows the vehicle movement.

Length: 2350 – 3350 mm.

Workload: 1200 N.



Cargo bar Gas – Short

General: Classic cargo bar used in most higher trailers on the market. Robust construction which follows the vehicle movement.

Length: 1900 – 2550 mm.

Workload: 1200 N.



Cargo bar Gas – Short

General: Classic cargo bar with lower pressure in the gas spring and used in most lightweight trailers on the market. Robust construction which follows the vehicle movement.

Length: 1900 – 2550 mm.

Workload: 900 N.

Colour: White handle.



Cargo Bar Gas, Handle, Spare Part

General: The complete handle of the gas cargo bar is easy to change.

Colour: Blue.



Cargo Bar Gas, Foot, Spare Part

General: It is possible to change the foot of the gas cargo bar at both ends.



Cargo Bar Gas, Gas Spring 1200 N, Spare Part

General: Gas springs to the gas cargo bar are available in 1200 N, 900 N and 700 N.



Recovery

Winch Brother Recovery Strap

Standard: EN12195-2: 2001 compliant.

Material: Polyester.

Width: 50mm.

Colour: Orange & Blue.



Heavy Duty 3.65m Emergency Tow Strap

Standard: EN12195-2: 2001 compliant.

Material: Polyester.

Width: 50mm.

Colour: Red.



Claw Hook Working End 50mm 3000kg

Standard: EN12195-2: 2001 compliant.

Material: Polyester.

Width: 50mm.

Colour: Blue.



Mobile Ratchet 50mm 3000kg

Standard: EN12195-2: 2001 compliant.

Material: Polyester.

Width: 50mm.

Colour: Blue.



Fixed Frame For Spec Lift Recovery

Standard: EN12195-2: 2001 compliant.

Material: Polyester.

Width: 50mm.

Colour: Blue.



Y Strap For Recovery Spectacle Lift

Standard: EN12195-2: 2001 compliant.

Material: Polyester.

Width: 50mm.

Colour: Blue.



Car Transporter

System 90 Round The Wheel Strap

Standard: EN12195-2: 2001 compliant.

Material: Polyester.

Width: 50mm.

Colour: Red.



System 2000 Round The Wheel Strap

General: VR105 “System 2000” round the wheel recovery and car transporter strap has a 4000kg rated break force (BF).

Standard: EN12195-2: 2001 compliant.

Material: Polyester.

Width: 50mm.

Colour: Red/Blue/Purple.



System 3000 Over The Wheel Strap

General: VR300 “System 3000” round the wheel recovery and car transporter strap has a 4000kg rated break force (BF).

Standard: EN12195-2: 2001 compliant.

Material: Polyester.

Width: 50mm or 35mm.

Colour: Blue.



Webbing Lashings

Load Lashing Rollo mini

General: Rollo mini is a lashing for securing lighter cargo. Rollo mini is easy to use and the functionality is like a retractable seat belt. The lashing is rolled out to desired length and then tightened like an ordinary lashing. After usage the band retracts automatically. The lashing only consists of one part which benefits ease of use and simplicity.



Width	Length	Design	Breaking load	LC*
mm	M		ton	daN
25	3,26	Double wire hook	0,6	300

*Lashing capacity

Load Lashing Rollo

General: Rollo is a lashing for securing lighter and midrange-weighted cargo. Rollo is easy to use and the functionality is like a retractable seat belt. The lashing is rolled out to desired length and then tightened like an ordinary lashing. After usage the band retracts automatically. The lashing only consists of one part which benefits ease of use and simplicity.

Standard: EN 12195-2.



Width	Length	Design	Breaking load	Lashing capacity
mm	M		ton	daN
50	3,26	Double wire hook	1,2	600

Load Lashing Rollo E-Fitting

General: Rollo is a very easy-to-use lashing for securing light or medium heavy loads. The function is similar to a regular seat belt. The webbing is rolled out to the desired length and is tensioned like a traditional ratchet, after use the webbing is rolled up automatically. The lashing is one piece only which creates simplicity and order.



Width	Length	Design	Breaking Load	LC*
mm	m		ton	daN
50	3,3	E-Fitting	1,5	750

*Lashing capacity

Fast Lashing Cambuckle

General: Fast lashing with cambuckle made of zinc. Sold separately or in a display box 40 pcs containing 5 different lengths of straps which are shown in different colours. This makes it easy for the customer to choose suitable straps.

Strap width: 25 mm.

Breaking force: 1,96 kN (200kp).




mini_blue

Code	Color	Length
		m
Display box		8 pieces of each 1, 1.5, 2, 2.5, 3.5
MINI-1	Black	1
MINI-1,5	Yellow	1,5
MINI-2	Red	2
MINI-2,5	Blue	2,5
MINI-3,5	Orange	3,5
MINI-4	Green	4
MINI-5	Black	5

Other length, breaking loads and colors on request.

Load Lashing – Stainless

Certex offers a comprehensive range of stainless steel lashing, from 25 mm to 50 mm webbing in various lengths together with stainless steel ratchets and fittings. Stainless lashing is used in acid environment as well as where the risk of corrosion is high. Used in barns, silage pits and for marine use.

 Contact us directly for more information.

