

Rope Pear Socket Nemag



The Nemag Rope Pear Socket is designed to, in combination with the Nemag Quick Release Link, smoothly pass over cable sheaves. The life span of the Nemag Rope Pear Socket generally surpasses that of the steel wire rope. The Rope Pear socket can be fitted by casting with a 2-component casting mass without the need for outside assistance, and ensures a strong connection. Nemag Rope Pear Sockets are suited to any type of steel wire rope.

Material: High grade casted steel.

Marking: Manufacturers logo, size and batch number.

Warning: The specified capacities shown are for grab operation. For other applications use safety factor 5:1

Safety factor: 5:1



Select a row from the table below, then click the add to quote button

Part Code	Code	Rope diameter mm	WLL ton	MBL T	A mm	B mm	C mm	D mm	E mm	F mm	G mm	H mm	I mm	Weight kg
--	RP-2	12-13	2	14	95	56	25	195	15,5	13,5	22	25	16	0,4
--	RP-3	14-15	2,5	17,5	109	64	28	220	17,5	15,5	24	29	19	0,6
--	RP-4	16-17	3	22,5	123	70	31	220	19,5	17,5	26	31	21	0,9
--	RP-5	18-19	4,5	27,5	135	84	33	245	21	19	30	42	23	1,3
--	RP-6	20-21	5	35	152	84	36	310	23	21	33	38	26	1,5
--	RP-7	22-24	7	42,5	166	100	40	310	26	23	37	48	30	2,2
--	RP-8	25-27	8	52,5	186	100	43	350	28	25	39	44	32	2,4
--	RP-9	28-30	11	70	202	120	45	350	31	27	40	58	35	3,7
--	RP-10	31-33	13	85	222	120	52	445	32	28,5	45	56	39	4,1
--	RP-11	34-36	15	95	239	142	55	445	36	31,5	50	70	42	5,9
--	RP-12	37-39	17	110	264	142	60	495	39	34,5	51	64	45	6,7
--	RP-13	40-42	21	125	285	166	63	555	43	36,5	59	80	48	9,3
--	RP-14	43-45	26	155	312	166	68	595	47	40	62	72	51	10,5
--	RP-15	46-48	30	180	337	170	75	595	51	44	66	68	55	12,1
--	RP-17	52-56	42,5	240	400	220	84	880	60	54	75	90	63	21,3

* Working load is max. working load for grabbing operations.

For other operations apply the min. safety factor 5:1

1

Add to quote

Combination of the Nemag Rope Pear Socket with Nemag Quick Release Link

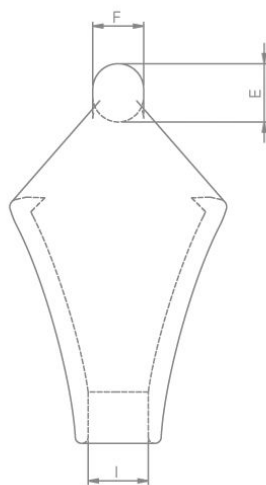
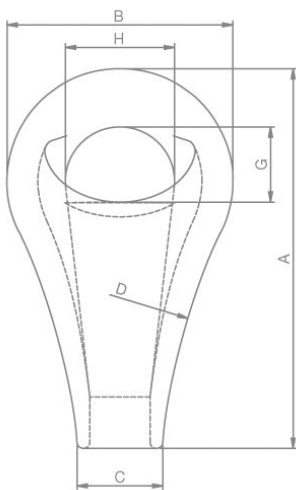
A Rope Pear Socket can be fitted to a Quick Release Link of the same size, or to a link with a different size as indicated in table

Pear code:	Link code:
RP-2	
RP-3	RL-4
RP-4	RL-4 / RL-5
RP-5	RL-4 / RL-5 / RL-6
RP-6	RL-5 / RL-6 / RL-7
RP-7	RL-6 / RL-7 / RL-8 / RL-9
RP-8	RL-7 / RL-8 / RL-9
RP-9	RL-8 / RL-9 / RL-10
RP-10	RL-9 / RL-10 / RL-11
RP-11	RL-10 / RL-11 / RL-12
RP-12	RL-11 / RL-12 / RL-13
RP-13	RL-12 / RL-13 / RL-14
RP-14	RL-13 / RL-14 / RL-15
RP-15	RL-14 / RL-15
RP-17	RL-17

info / downloads

info / downloads

Download



Unit C1, Harworth Industrial Estate
Bryans Close
Harworth
Doncaster
DN11 8RY

01302 756 777
info@certex.co.uk