

Open Spelter socket OSS



General: Forged clevis fittings for embedment with cast compound. Delivered complete with bolt and cotter pin.

WARNING! Compare the spelter's and the wire rope's minimum breaking load.

Finish: Galvanized.

Note: For intermediate rope diameter select fittings with nearest following size.

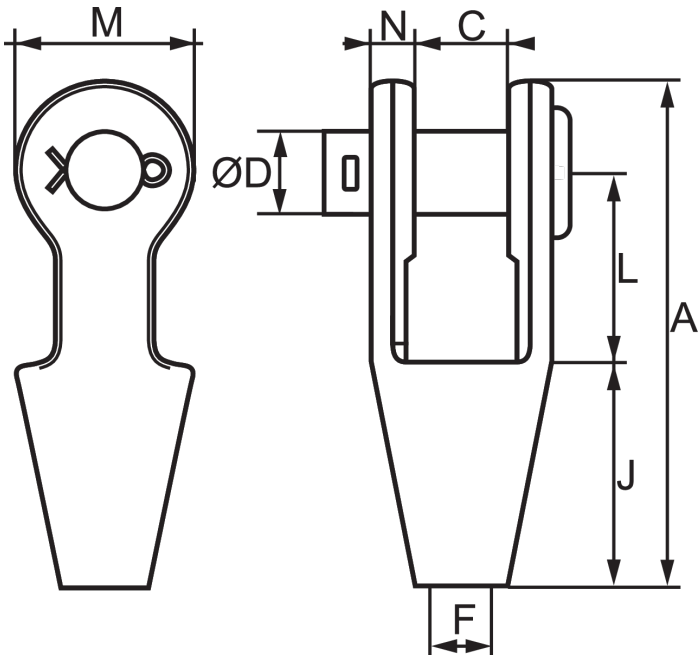


Select a row from the table below, then click the add to quote button

Part Code	Code	MBL t	Diameter mm	N (mm)	A mm	C mm	D mm	F mm	J mm	L mm	M mm	Weight kg
--	OSS-196 P	8	6-7	9	109	19	16	8,5	50	40	34	0.4
--	OSS-197 P	12	8-10	11	124	21	20,6	12	57	45	42	0.8
--	OSS-198 P	20	11-13	12	142	25	25	14	64	51	50	1
--	OSS-199 P	25	14-16	14	171	32	30	17,5	76	63	58	1.8
--	OSS-100 P	40	18-19	16	205	38	35	21	89	76	70	3.2
--	OSS-104 P	55	20-22	19	235	44	41	24	101	89	80	4.6
--	OSS-108 P	75	23-26	22	275	51	51	28	114	101	104	8
--	OSS-111 P	90	27-30	25	306	57	57	32	127	114	114	11
--	OSS-115 P	125	31-36	28	338	63	63	38	139	127	126	16
--	OSS-118 P	150	37-39	30	394	76	70	41	152	162	142	23
--	OSS-120 P	170	40-42	33	418	76	76	44	165	165	152	27
--	OSS-125 P	225	43-48	39	468	89	89	51	190	178	176	41
--	OSS-128 P	280	49-54	46	552	101	95	57	216	228	194	58
--	OSS-130 P	360	55-60	53	598	113	108	63	228	250	210	85

1

Add to quote



Unit C1, Harworth Industrial Estate
Bryans Close
Harworth
Doncaster
DN11 8RY

01302 756 777
info@certex.co.uk