

Closed Swage Socket Crosby S-502



Sockets incorporate a reduced machined area of the shank which is the equivalent to the proper after swage dimension. Before swaging, this provides for an obvious visual difference in the shank diameter. After swaging, a uniform shank diameter is created allowing for a QUIC CHECK™ permanent visual inspection opportunity. Designed to quickly determine whether the socket has been through the swaging operation and assist in field inspections, it does not eliminate the need to perform standard production inspections which include gauging for the proper after swage dimensions or proof loading.

Hardness controlled by spheroidise annealing.

Swage socket terminations have an efficiency rating of 100% based on the catalogue strength of wire rope.

Material: Carbon Steel.

Marking: ID code and Manufacturer's symbol.

Finish: Ungalvanised.

Safety factor: 5:1

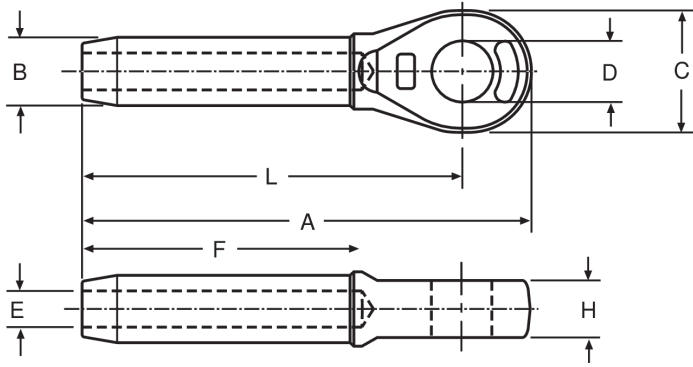


Select a row from the table below, then click the add to quote button

Part Code	Rope diameter mm	Max. after swage dia mm	A mm	B mm	C mm	D mm	E mm	F mm	H mm	L mm	Weight kg
--	6	11,7	109	12,7	35,1	19,1	6,85	54	12,7	89,0	0,15
--	8	18,0	138	19,6	41,1	22,4	8,65	81	17	114	0,34
04B0260	9-10	18,0	138	19,6	41,1	22,4	10,4	81	17	114	0,33
04B0270	11-12	23,1	176	24,9	51,0	26,9	12,2	108	21,8	146	0,64
04B0280	13	23,1	176	24,9	51,0	26,9	14,0	108	21,8	146	0,64
04B0295	14	29,5	220	31,8	60,5	31,8	15,5	135	28,7	184	1,32
04B0300	16	29,5	220	31,8	60,5	32,5	17	135	28,7	184	1,29
04B0306	18-20	36,1	261	39,4	73	36,6	20,3	162	33,3	219	2,27
--	22	39,4	303	43,2	79	44	23,9	189	38,1	257	3,08
--	24-26	45,7	344	50,5	92	52,5	26,9	216	44,5	292	4,72
--	28	52,0	382	57,0	102	58,5	30,2	243	51	324	6,72
--	32	58,5	430	64,5	114	65	33,8	270	57	365	9,78
--	33-34	65,0	473	71	127	65	36,8	297	57	400	12,9
--	38-40	71,5	511	78	140	71,5	40,1	325	63	432	17,3
--	44	77,5	598	86	159	90,5	47,2	378	76	508	23,1
--	48-52	90,5	702	100	184	96,5	53,5	432	82,5	584	40,5

1

Add to quote



Unit C1, Harworth Industrial Estate
Bryans Close
Harworth
Doncaster
DN11 8RY

01302 756 777
info@certex.co.uk