

Shortening Clutch grade 8

POWERTEX



Standard: EN 1677-1

Features: Chain Shortening Clutch European Manufactured, Long service life.

Material: Grade 80 Alloy Steel

Marking: Manufacturer's symbol and Grade

Finish: Powder Coated

Safety factor: 4:1

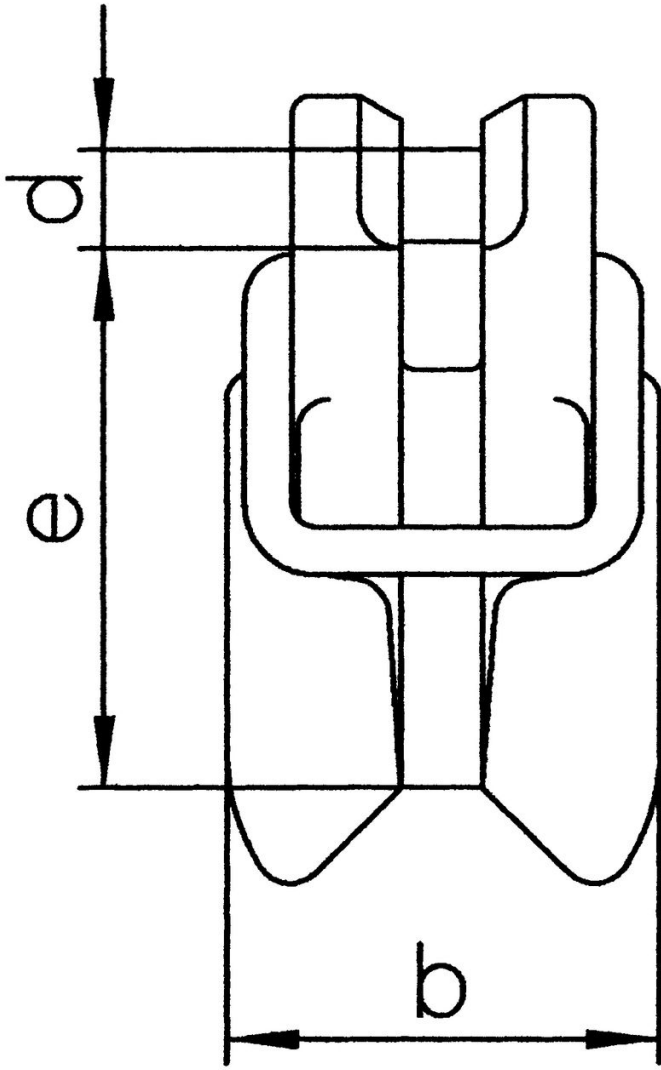
Grade: 8

Select a row from the table below, then click the add to quote button

Part Code	Code	WLL ton	Chain (mm)	e (mm)	b (mm)	d mm	Weight kg
--	VKL 06.8	1.12	6	45	36	7.4	0.27
07B0230	VKL 07.8	1.5	7	58	44	9	0.5
--	VKL 08.8	2	8	58	44	10	0.5
07B0240	VKL 10.8	3.15	10	70	55	12.5	0.8
07B0250	VKL 13.8 *	5.3	13	90	70	16	1.53

Please note: Only load in lying chain! Only use with safety device! *) with cotter pin as security part - see image

Add to quote



Unit C1, Harworth Industrial Estate
Bryans Close
Harworth
Doncaster
DN11 8RY

01302 756 777
info@certex.co.uk