

Manual Chain Hoist KITO CB Series

KITO

The KITO CB Series chain hoists have a shock resistant gear casing, double ratcheted spring, precision gears and double casing (to protect against dust and water), mechanical breaks, load chain guide and long-life chain. Reliable, durable and easy to use. Capacity from 500 kg to 50 t (special design up to 100 t).

Options:

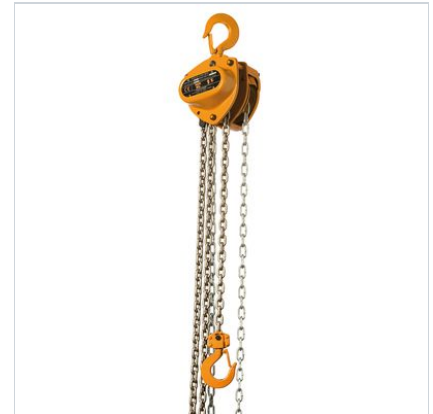
- Plain trolley
- Geared trolley
- Canvas chain bucket
- Overload limiter

Material: Nickel plated load chain, grade 10.

Marking: Type plate with WLL, CE-marking and serial number.

Finish: Painted.

Safety factor: 4:1.



Select a row from the table below, then click the add to quote button

Part Code	Code	WLL ton	s mm	Load chain Ø mm	Chain falls	Std. lifting height m	Chain pull to lift full load in daN	A mm	B mm	C mm	e mm	f mm	g mm	t mm	Weight kg
06A0410	CB005	0.5	35,5	5,0 x 15,1	1	3	23,5	158	161	285	69	99	27	12,1	10
06A0420	CB010	1	42,5	6,3 x 19,1	1	3	28,4	162	161	295	71	99	29	16,0	11.5
06A0430	CB015	1.5	47,5	7,1 x 21,2	1	3	34,3	171	182	350	78	112	34	19,5	14.5
06A0440	CB020	2	50,0	8,0 x 24,2	1	3	35,3	182	202	375	87	125	36	21,8	20
06A0450	CB025	2.5	53,0	9,0 x 27,2	1	3	32,3	192	233	420	91	143	40	24,3	27
06A0460	CB030	3	56,0	7,1 x 21,2	2	3	35,3	171	235	510	78	162	42,5	27,2	24
06A0470	CB050	5	63,0	9,0 x 27,2	2	3	33,3	192	282	600	91	194	46,5	34,5	41
06A0480	CB075	7.5	85,0	9,0 x 27,2	3	3,5	34,3	192	373	770	91	253	72,5	47,5	63
06A0490	CB100	10	85,0	9,0 x 27,2	4	3,5	35,3	192	438	760	111	308	72,5	47,5	83
--	CB150	15	100	9,0 x 27,2	6	3,5	36,3	268	492	1,020	119	337	80,0	60,0	155
--	CB200	20	110	9,0 x 27,2	8	3,5	35,3 x 2	374	746	1,180	187	373	81,0	67,0	235
--	CB300	30	125	9,0 x 27,2	10	3,5	42,1 x 2	404	746	1,300	202	373	103	85,0	310
--	CB400	40	140	9,0 x 27,2	14	3,5	42,1 x 2	502	760	1,480	251	380	104	95,0	480
--	CB500	50	155	9,0 x 27,2	16	3,5	48,0 x 2	544	796	1,560	272	398	112	106,0	640

1

Add to quote

Select ▾

Download

