

Lever Hoist KITO LB Series

KITO

The KITO LB leverhoist is built with premium grade components and makes it particularly suitable for continuous operation under most severe conditions.

Features:

- Standard supplied with a unique freewheel chain adjusting mechanism with overload protection.
- Rugged and ergonomic lever handle.
- Smooth geared mechanism for effortless handling.
- Robust mechanical load brake increases the safety of the operator.
- Double-reduction gearing requires minimum manual power for operation at full load.
- Open load sheave allows easy inspection and cleaning without dismantling the unit.
- Sealed gears and brake are protected against damage from dust and water.
- Fourfold riveted and forged carbon steel bottom hook.
- Abrasion-resistant nickel-plated load chain V(G100) for high and uniform strength (1000 N/mm²), in accordance with standard DIN EN 818-7.

Optional:

- Friction clutch
- Overload signal
- Wire rope clip
- Shipyard hooks
- Without freewheel mechanism

Material: High grade Steel housing, nickel-plated load chain, Carbon steel hooks

Marking: CE-marked

Warning: Minimum load is needed for the load pressure brake to work correct.

Safety factor: 4:1



Select a row from the table below, then click the add to quote button

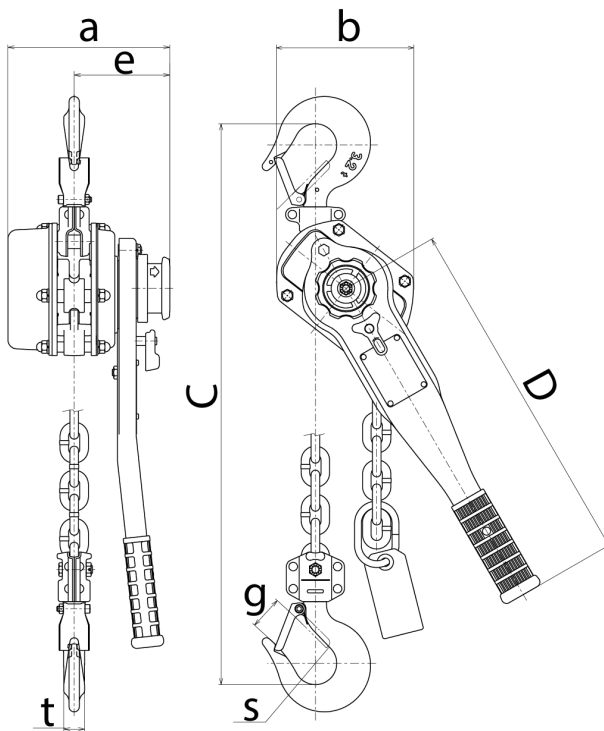
Part Code	Code	WLL ton	Lifting height m	Min. load kg	Hand pull to lift full load daN	Load chain Ø mm	Chain falls	A mm	B mm	C mm	D mm	e mm	g mm	S mm	t mm	Weight kg
06B0410	LB008S015	0,8	1,5	25	28,4	5,6 x 15,7	1	114	119	280	245	97	23,5	32,5	14	5,7
06B0420	LB010S015	1	1,5	25	35,3	5,6 x 15,7	1	114	119	300	245	97	29	42,5	15	5,9
06B0430	LB016S015	1,6	1,5	38	33,3	7,1 x 19,9	1	159	126	335	265	100	32	42,5	19	8
06B0440	LB025S015	2,5	1,5	54	36,3	8,8 x 24,6	1	173	150	375	265	102	36,5	47	21	11,2
06B0450	LB032S015	3,2	1,5	35	36,3	10,0 x 28,0	1	190	159	395	415	112	39	50	24,5	15
06B0460	LB063S015	6,3	1,5	90	37,2	10,0 x 28,0	2	190	217	540	415	112	50	60	34	26
06B0470	LB090S015	9	1,5	130	38,2	10,0 x 28,0	3	190	304	680	415	112	72,5	85	41,5	40

*Weight with 1,5 m standard lifting height.

The last 2 digits in the Art No indicates the lifting height.

1

Add to quote



Unit C1, Harworth Industrial Estate
 Bryans Close
 Harworth
 Doncaster
 DN11 8RY

01302 756 777
info@certex.co.uk