

Crosby Shackle G-210



Design: Screw pin chain shackles meet the performance requirements of BS EN 13889

Marking: According to standard

Standard: EN 13889

Safety factor: 6:1

Grade: 6



Select a row from the table below, then click the add to quote button

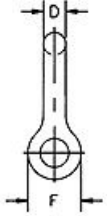
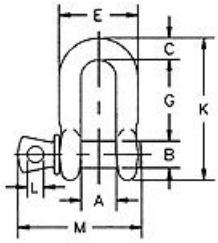
Part Code	WLL	Nominal Size (in.)	Tolerance +/- G	Tolerance +/- A	A mm	B mm	C mm	D mm	E mm	F mm	G mm	K mm	L mm	M mm	Weight kg
05A0470	0.5	1/4	1.5	1.5	11.9	7.87	6.35	6.35	24.6	15.5	22.4	40.4	4.83	35.1	0.05
05A0480	0.75	5/16	1.5	1.5	13.5	9.65	7.87	7.87	29.5	19.1	33	48.5	5.59	42.2	0.08
05A0490	1	3/8	3.3	1.5	16.8	11.2	9.65	9.65	35.8	23.1	31.8	58.5	6.4	51.5	0.13
05A0500	1.5	7/16	3.3	1.5	19.1	12.7	11.2	11.2	41.4	26.9	36.6	67.5	7.87	60.5	0.2
05A0510	2	1/2	3.3	1.5	20.6	16	12.7	12.7	46	30.2	41.4	77	9.65	68	0.27
05A0520	3.25	5/8	3.3	1.5	27	19.1	15.8	16	58.5	38.1	51	95	11.2	85	0.57
05A0530	4.75	3/4	6.35	1.5	31.8	22.4	20.6	19.1	70	46	60.5	115	12.7	101	1.19
05A0540	6.5	7/8	6.35	1.5	36.6	25.4	24.6	22.4	81	53	71.5	135	12.7	114	1.43
05A0550	8.5	1	6.35	1.5	42.9	28.7	25.4	25.4	93.5	60.5	81	151	14.2	129	2.15
05A0560	9.5	1 1/8	6.35	1.5	46	31.8	31.8	28.7	103	68.5	91	172	16	142	3.06
05A0570	12	1 1/4	6.35	3.3	51	35.1	35.1	31.8	115	76	100	191	17.5	156	4.11
05A0575	13.5	1 3/8	6.35	3.3	57	38.1	38.1	35.1	127	84	111	210	19.1	174	5.28
05A0580	17	1 1/2	6.35	3.3	60.5	41.4	41.2	38.1	137	92	122	230	20.6	187	7.23
05A0585	25	1 3/4	6.35	3.3	70	51	54	44.5	162	106	146	279	25.4	231	12.13
05A0590	35	2	6.35	3.3	82.5	57	51	51	184	122	171	312	30	263	19.19
05A0595	55	2 1/2	6.35	6.35	105	70	66.5	66.5	238	145	203	377	35.1	330	32.55

*NOTE: Maximum Proof Load is 2 times the Working Load Limit or as designated. Maximum Ultimate Load is 6 times the Working Load Limit.

†Furnished in Bolt Type only

1

Add to quote



Unit C1, Harworth Industrial Estate
Bryans Close
Harworth
Doncaster
DN11 8RY

[01302 756 777](tel:01302756777)
info@certex.co.uk