

# Crosby Shackle G-209-A



**Design:** Screw pin shackles meet the performance requirements of Federal Specification RR-C-271D, Type IVA, Grade B, Class 2, except for those provisions required of the contractor.

**Proof load:** 2 x WLL.

**Standard:** RR-C-271D.

**Material:** Forged alloy steel.

**Marking:** WLL.

**Finish:** Galvanized.

**Safety factor:** 4,5:1.

**Grade:** 8



Select a row from the table below, then click the add to quote button

Part Code	WLL ton	Nominal size In.	A mm	B mm	C mm	D mm	E mm	F mm	G mm	H mm	L mm	M mm	P mm	Weight kg
--	2	3/8	16.8	11.2	36.6	9.65	26.2	23.1	45.2	63.5	6.35	51.5	9.65	0.14
--	2.6	7/16	19.1	12.7	42.9	11.2	29.5	26.9	51.5	74.0	7.85	60.5	11.2	0.17
--	3.3	1/2	20.6	16.0	47.8	12.7	33.3	30.2	58.5	83.5	9.65	68.5	12.7	0.29
--	5	5/8	26.9	19.1	60.5	16.0	42.9	38.1	74.5	106	11.2	85.0	17.5	0.63
05A0290	9.5	7/8	36.6	25.4	84.0	22.4	58.0	53.0	102	148	12.7	114	24.6	1.53
--	12.5	1	42.9	28.7	95.5	25.4	68.5	60.5	119	167	14.2	129	26.9	2.41
--	15	1-1/8	46.0	31.8	108	29.5	74.0	68.5	131	190	16.0	142	31.8	3.09
--	18	1-1/4	51.5	35.1	119	32.8	82.5	76.0	146	210	17.5	156	35.1	4.31
--	21	1-3/8	57.0	38.1	133	36.1	92.0	84.0	162	233	19.1	174	38.1	6.01

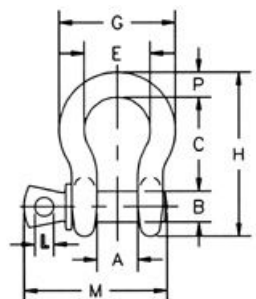
\*NOTE: Maximum Proof Load is 2 times the Working Load Limit.

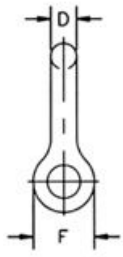
NOTE: Maximum Proof Load is 2 times the Working Load Limit.

\*NOTE: Maximum Proof Load is 2 times the Working Load Limit.

1

Add to quote





---

Unit C1, Harworth Industrial Estate  
Bryans Close  
Harworth  
Doncaster  
DN11 8RY

01302 756 777  
[info@certex.co.uk](mailto:info@certex.co.uk)