

Swivel Hook Crosby L-322 CN



Features:

Hoist hooks incorporate markings forged into the product which address two (2) QUIC-CHECK® features:

- Deformation Indicators -- Two strategically placed marks, one just below the shank or eye and the other on the hook tip, which allows for a QUIC-CHECK® measurement to determine if the throat opening has changed, thus indicating abuse or overload.
- Angle Indicators — Indicates the maximum included angle which is allowed between two (2) sling legs in the hook. These indicators also provide the opportunity to approximate other included angles between two sling legs.



Material: Carbon steel

Marking: CE-marked

Note: This hook is a positioning device and is not intended to rotate under load.

Safety factor: 5:1

Grade: 4

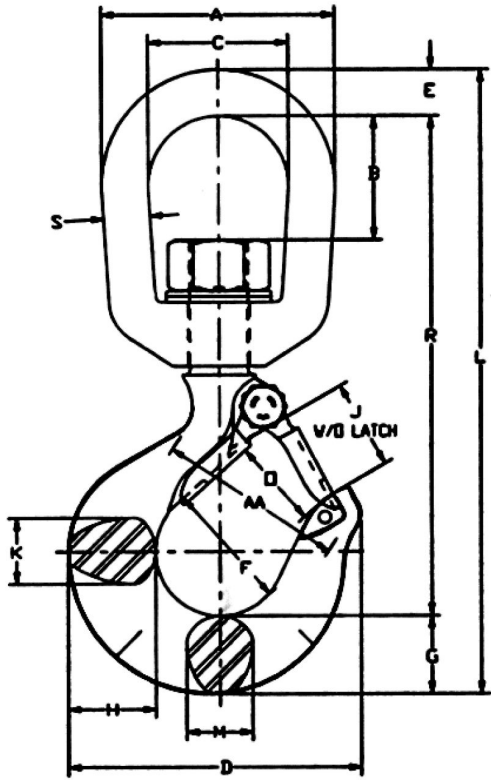
Select a row from the table below, then click the add to quote button

Part Code	WLL	A mm	B mm	C mm	D mm	F mm	G mm	H mm	J mm	K mm	L mm	M mm	O* mm	R mm	S mm	AA** mm	Weight kg
--	0,75	51	20,8	31,8	72,5	31,8	18,5	20,6	23,6	16	144	16	23,6	116	9,65	38,1	0,34
--	1	63,5	33,3	38,1	80	35,1	21,3	23,9	24,6	18	170	18	24,6	136	12,7	50,8	0,57
--	1,6	76	38,1	44,5	91	38,1	25,4	29,5	26,9	22,4	197	22,4	26,9	155	16	50,8	1,02
--	2	76	38,1	44,5	102	41,1	28,7	33,3	30,2	23,9	210	23,9	29,5	165	16	50,8	1,04
--	3,2	89	41,7	50,8	123	51	36,6	41,4	38,1	33,3	246	28,7	35,8	191	19,1	63,5	2,25
--	5	116	58	63,5	160	63,5	46	52,5	45,2	42,2	317	36,6	42,9	245	25,4	76,2	4,67
--	7,5	127	62	70	192	76	57	67	51	47,8	375	41,4	56,5	289	28,7	101	8,8
--	10	143	63	79	212	82,5	66	74,5	66,5	55,5	417	49,3	61	311	31,8	101	10,5
--	15	180	95,5	104	263	108	76	89	86,5	68,5	542	60,5	81	424	38,1	127	21,3

Standard Proof load is 2 times WLL .
* Dimension for standard latch kit S-4320.
** Deform indicators

1

Add to quote



Unit C1, Harworth Industrial Estate
Bryans Close
Harworth
Doncaster
DN11 8RY

01302 756 777
info@certex.co.uk