

Eye Bolt Shoulder Type Machinery Crosby S/M-279



Design: Forged Steel – Quenched & Tempered.
Working Load Limits shown are for in-line pull.
Recommended for straight line pull.
Fatigue rated at 1 1/2 times the Working Load Limit at 20,000 cycles.
Standard bolts threaded UNC.
M-279 (metric threads) available.

Safety factor: 4:1

Select a row from the table below, then click the add to quote button

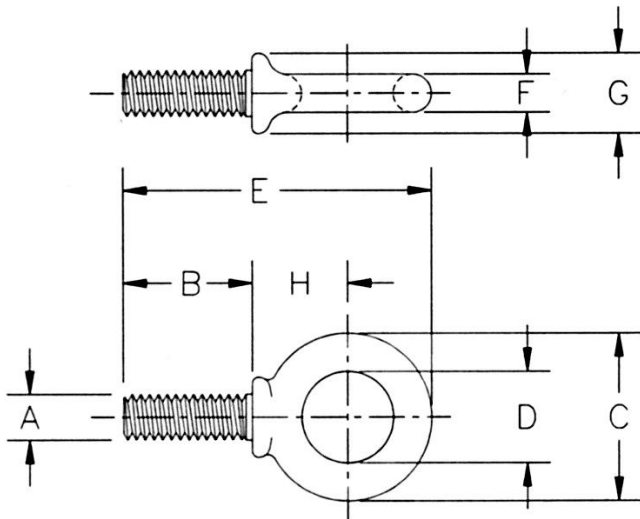
Part Code	WLL ton	thread A	B mm	C mm	D mm	E mm	F mm	G mm	H mm
--	0,29	1/4 - 20	25,9	28,7	19,1	58	4,85	13,5	19,6
--	0,54	5/16 - 18	29,2	35,1	22,4	69,5	6,35	15	24,1
--	0,7	3/8 - 16	32,3	41,1	25,4	78	7,85	17,5	26,7
05B0600	1,18	1/2 - 13	38,9	49,5	30,2	94	9,65	23,1	32,3
05B0610	2,35	5/8 - 11	45,5	60,5	35,1	113	12,7	28,7	38,9
05B0620	3,26	3/4 - 10	52	70	38,1	129	16	35,1	43,4
05B0630	4,8	7/8 - 9	58,5	82,5	44,5	149	19,1	39,6	50,8
05B0640	6,03	1 - 8	65,5	95,5	51	169	22,4	46	58,4
--	6,8	1-1/8 - 7	78,5	114	63,5	202	25,4	58	69,3
--	9,52	1-1/4 - 7	91,5	140	76	241	31,8	70	83,3

1

Add to quote

M-279 Metric

Stock Code	Size mm	Working Load Limit t	Dimensions (mm)							Weight kg
			B	C	D	E	F	G	H	
11.401045753	M6	0,2	13	28.7	19.1	47	4.9	13.5	19.6	0.03
11.401045789	M8	0,4	13	35.1	22.4	54.6	6.4	15	24.1	0.05
11.401045833	M10	0,64	17	41.1	25.4	64.3	7.9	17.5	26.5	0.07
11.401045869	M12	1	20.5	49.5	30.2	77.7	9.7	23.1	32.8	0.11
11.401045913	M16	1,8	27	60.5	35.1	96	12.7	28.7	38.9	0.25
11.401045995	M20	2,5	30	70	38.1	108	16	35.1	43.4	0.42
11.401046029	M24	4	36	95.5	51	142	22.4	46	58.4	1.05
11.401046038	M27	5	69.8	107	57.1	183	24.6	52.3	59.7	1.42
11.401046075	M30	6	45	114	63.5	171	25.4	58	69.3	1.77
11.401046109	M36	8.5	54	140	76	207	31.8	70	83.3	3.12
11.401046118	M42	14	95.2	159	88.9	266	35	76.2	91.4	4.58
11.401046127	M48	17.3	102	194	101	313	46	85.9	114	8.71
11.401046136	M64	29.5	127	223	114	378	53.8	108	140	14.74



Unit C1, Harworth Industrial Estate
 Bryans Close
 Harworth
 Doncaster
 DN11 8RY

01302 756 777
info@certex.co.uk