

# Swivel Eye / Eye Crosby S5



**Design:** Eye & eye swivel with tapered roller thrust bearing. Suitable for frequent rotation under load.

**Marking:** WLL.

**Finish:** Painted.

**Note:** Crosby swivels should only be used with the recommended wire rope.

**Safety factor:** 5:1

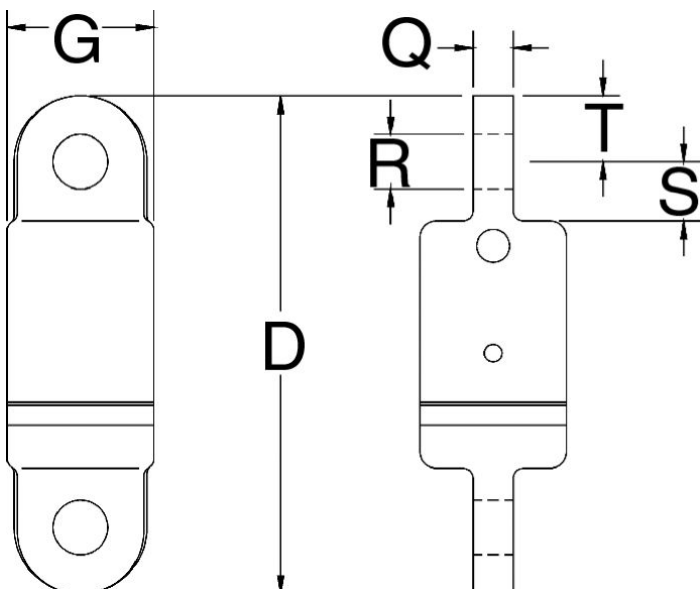


Select a row from the table below, then click the add to quote button

Part Code	WLL ton	Rope Ø mm	Swivel No	D mm	G mm	Q mm	R mm	S mm	T mm	Weight kg
--	3	13	3-S-5	239	70	19.1	26.2	28.4	31.8	3.86
--	5	16	5-S-5	249	76	25.4	32.5	31.8	31.8	5.13
--	8.5	19	8-S-5	302	102	31.8	35.8	41.1	38.1	13.3
--	10	22	10-S-5	394	114	42.9	42.9	70	47.8	19.1
--	15	26	15-S-5	416	127	49.3	51.5	70	54	22.2
--	25	-	25-S-5	565	152	57	58.5	98.5	60.5	59
--	35	-	35-S-5	565	165	57	58.5	98.5	60.5	66
--	45	-	45-S-5	673	178	63.5	64.5	102	76	98

\*Individually Proof Tested to 2 times the Working Load Limit. Ultimate Load is 5 times the Working Load Limit.

1 [Add to quote](#)



---

Unit C1, Harworth Industrial Estate  
Bryans Close  
Harworth  
Doncaster  
DN11 8RY

01302 756 777  
[info@certex.co.uk](mailto:info@certex.co.uk)