

Snatch Block McKissick 406 Tail Board - Champion



General:

The McKissick snatch block 406 Champion from Crosby is a Tail board type snatch block. Can be delivered with bronze bushing (BB) and with roller bearing (RB).

Features:

- Bolt for opening feature is retained, to ensure no lost bolts.
- Opening feature permits easy insertion of rope without reeving, or while the block is suspended.
- Center pin equipped with pressure lube fitting.
- All sizes feature sheave grooves suited for a range of wire line diameters.
- Meets or exceeds all requirements of ASME B30.26 including identification ductility, design factor, proof load and temperature requirements.
- Meet other critical performance requirements including fatigue life and material traceability, not addressed by ASME B30.26.



Material: Forged steel.

Safety factor: 4:1

Select a row from the table below, then click the add to quote button

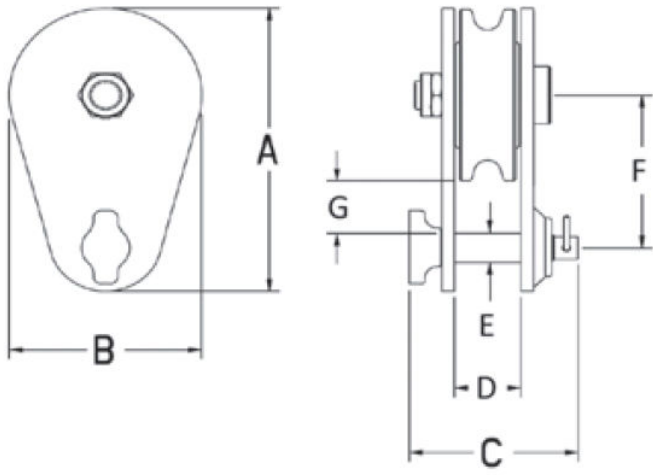
Part Code	WLL ton	Sheave dia. mm	Bearing Code	Wire Rope Size mm	A mm	B mm	C mm	D mm	E mm	F mm	G mm	Weight kg
--	15	203	BB	19-22	355	206	130	60	32	171	54	13,6
--	15	203	RB	19-22	335	206	130	60	32	171	54	13,6
--	15	254	BB	19-22	379	257	130	60	32	191	49	19,1
--	15	254	RB	19-22	379	257	130	60	32	191	49	19,1

Bearing codes:

BB = Bronze Bushing

RB = Roller Bearing

Add to quote



Unit C1, Harworth Industrial Estate
Bryans Close
Harworth
Doncaster
DN11 8RY

[01302 756 777](tel:01302756777)
info@certex.co.uk