

## Vertical Lifting Clamps Non Marring- IPNM10 series

### Product information



The IPNM10 series vertical lifting clamps are used for lifting, turning, moving or vertical transfer of sheet, plates, or fabrications from horizontal to vertical and down to horizontal (180°) as needed without marring the surface of the material. Materials such as aluminum, stainless steel, painted materials, aircraft skins, composite material, glass, plastic, etc., can be lifted without marring or scratching the material surface. Available in a variety of models:

IPNM10(N) - standard model.

IPNM10P - Equipped with protection cap. Reduces risk of damaging surrounding plates/material.

IPNM10J - clamps with larger jaw opening.

IPNM10JC - Special clamp with curved jaws. Only available on request.

#### Features:

- Available in capacities of 0.5 , 1 and 2 metric tons.
- Wide variety of jaw openings available: 0 to 40mm.
- Welded alloy steel body for strength and smaller size. Forged alloy components, where required.
- Individually Proof Tested to 2 times the Working Load Limit with certification.
- User manual with test certificate is included with each clamp.
- Full 180° turning range for material transfer, turning or moving.
- Lock open, lock closed ability with latch for pretension on material and then release of material.
- There is no minimum WLL required.
- Maintenance and repair kits are available.
- All sizes are RFID EQUIPPED.

[... Read more](#)

**Material:** Alloy steel.

**Marking:** According to standard, CE-marked, WLL, Logo, Jaw opening, Serial number

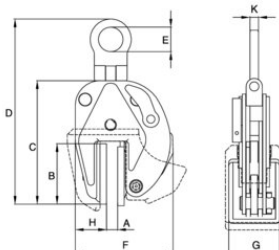
**Temperature range:** -20°C up to +70°C

**Standard:** EN 13155

**Warning:** To be handled material must be clean and dry.

## Vertical Lifting Clamps Non Marring- IPNM10 series

### Blueprint



### Technical data

Part code	WLL ton	Jaw width mm	Model	A mm	B mm	C mm	D, mm	E mm	F mm	G, mm	H, mm	K mm	Weight kg
502100050100180	0.5	0-10	0,5-IPNM10N	0-10	84	159	235	40	128	60	42	11	2.7
502100050100184	0.5	0-10	0.5-IPNM10P	0-10	82	157	221	40	145	68	48	11	2.8
502100100200180	1	0-20	1-IPNM10N	0-20	97	209	278	40	184	80	56	11	4.4
502100100200184	1	0-20	1-IPNM10P	0-20	97	195	276	40	205	82	66	11	4.5
502100100370185	1	20-37	1-IPNM10NJ	20-37	97	220	321	40	200	80	56	11	4.7
502100100250186	1	0-25	1-IPNM10NJ1	0-25	97	238	351	40	213	80	63	11	5.5
502100200400180	2	0-40	2-IPNM	0-40	153	258	396	70	296	100	161	16	14.5