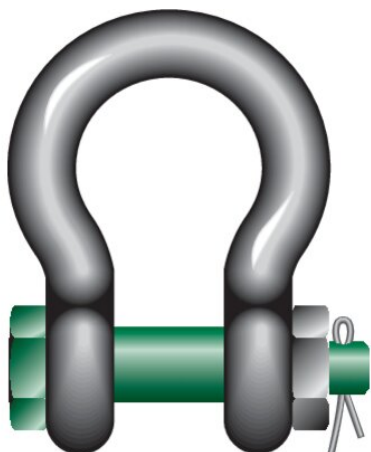


Bow Shackles BN Green Pin® G-4163

Product information



The Green Pin® Bow Shackle BN is a bow shackle with a safety bolt. The shackle offers a double safety (split pin and safety bolt) which prevents accidental unscrewing of the pin. Long-term durability is assured due to the galvanization of the Green Pin® Bow Shackle BN. Of course, the Green Pin® Bow Shackle BN conforms to a wide range of certifications from class societies such as DNV GL. The Green Pin® Bow Shackle BN is suitable for both one-leg and multi-leg systems and is available in a range with a working load limit from 0.5 up to 85 ton.

Certification on request: 2.1, 2.2, 3.1, MTCa, DNV 2.7-1a, DNV 2.7-1b, DNVGL-ST-0378, ABS PDA, ABS MA

... [Read more](#)

Material: Bow and pin high tensile steel, quenched and tempered

Marking: According to standard, CE-marked

Temperature range: -40°C up to +200°C

Finish: Hot dip galvanized

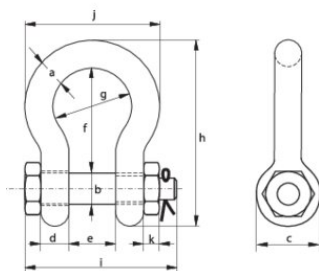
Standard: EN 13889

Safety factor: 6:1

Grade: 6

Bow Shackles BN Green Pin® G-4163

Blueprint



Technical data

Part code	WLL ton	a mm	b mm	c mm	d mm	e mm	f mm	g mm	h mm	i mm	j mm	k mm	Weight kg
420100050570	0.5	7	8	16,5	7	12	29	20	48,5	42	34	4	0.06
420100080570	0.75	9	10	20	9	13,5	32	22	56	50	40	5	0.11
420100100570	1	10	11	22,5	10	17	36,5	26	63,5	60	46	8	0.16
420100150570	1.5	11	13	26,5	11	19	43	29	74	67	51	11	0.22
420100200570	2	13,5	16	34	13	22	51	32	89	82	58	13	0.42
420100330570	3.25	16	19	40	16	27	64	43	110	98	75	17	0.74
420100480570	4.75	19	22	46	19	31	76	51	129	114	89	19	1.18
420100650570	6.5	22	25	52	22	36	83	58	144	130	102	22	1.77
420100850570	8.5	25	28	59	25	43	95	68	164	150	118	25	2.58
420100950570	9.5	28	32	66	28	47	108	75	185	166	131	27	3.66
420101200570	12	32	35	72	32	51	115	83	201	178	147	30	4.91
420101350570	13.5	35	38	80	35	57	133	92	227	197	162	33	6.54
420101700570	17	38	42	88	38	60	146	99	249	202	175	19	8.19
420102500570	25	45	50	103	45	74	178	126	300	249	216	23	14.22
420103500570	35	50	57	111	50	83	197	138	331	269	238	26	19.85
420104250570	42.5	57	65	130	57	95	222	160	377	301	274	29	28.33
420105500570	55	65	70	145	65	105	260	180	433	330	310	32	39.59
420108500570	85	75	83	162	73	127	329	190	527	380	340	39	62